

# **RELIEF AT SOURCE BELGIUM AND FRANCE**

## **DATA DICTIONARY**

V.1 OCTOBER 2025



**EURONEXT SECURITIES**

# Summary

|   |           |
|---|-----------|
| <b>1. General.....</b>  | <b>3</b>  |
| 1.1 Scope of the Document.....  | 3         |
| 1.2 Validity .....  | 3         |
| 1.3 References .....  | 4         |
| 1.4 Glossary .....  | 4         |
| <b>2. CLIENT CONFIGURATION .....</b>                                      | <b>5</b>  |
| 2.1 Document types.....   | 5         |
| 2.2 BO Types .....  | 5         |
| <b>3. FILE SPECIFICATIONS.....</b>  | <b>6</b>  |
| 3.1 BO Profile .....  | 6         |
| 3.2 BO Document Report .....  | 6         |
| 3.3 Tax Breakdown File_Cash Leg(csv) DVCA and DVOP Cash.....              | 7         |
| 3.4 Tax Breakdown file_Security Leg – DVOP noncash, DVSE, DRIP (csv)..... | 8         |
| <b>4. UPLOAD PROCESS .....</b>  | <b>10</b> |
| 4.1 File Upload Process .....   | 10        |
| <b>5. FILE VALIDATION RULES.....</b>                                      | <b>12</b> |
| 5.1 UI Upload .....   | 12        |
| 5.2 sFTP Upload.....  | 12        |
| <b>6. SFTP .....</b>  | <b>14</b> |
| <b>7. FILE TEMPLATES.....</b>   | <b>15</b> |
| 7.1 BO Profile .....  | 15        |
| 7.2 BO Document Report .....  | 18        |
| 7.2.1. Belgium Required Document Fields.....                              | 24        |
| 7.2.2. France required document fields .....                              | 25        |
| 7.3 Tax Breakdown file_Cash Leg(csv) DVCA and DVOP Cash .....             | 26        |
| 7.4 Tax Breakdown file_Security Leg– DVOP non cash, DVSE, DRIP (csv)...   | 28        |
| <b>8. Appendix .....</b>  | <b>30</b> |

# 1. General

## 1.1 Scope of the Document

The Euronext Securities tax system enables participants to upload files through dedicated channels (SFTP or UI) to obtain accurate information on the beneficial owner. This information is essential for the provisional tax relief service, specifically aimed at determining the appropriate tax rate based on reliable and verified beneficial owner data.

This document is addressed to participants and aims to explain the interaction with the Euronext Securities tax system through the dedicated files that the client must upload.

Actors involved:

- Client/Participant user: users who can upload the file through the foreseen channels
- Internal users: Euronext Securities Milan users, who can access full data across participants
- Euronext Securities Tax System

Within the scope of the tax relief service, the participant is required to upload documents to the system, each serving a specific purpose and to be provided at a defined stage of the process. Upon upload, the system will perform validation checks, notify the participant of the result, and indicate any subsequent actions to be undertaken by the participant.

The participant is required to upload the following documents:

1. BO Profile
2. BO Document report
3. Tax Breakdown (DVCA and DVOP Cash)
4. Tax Breakdown (DVOP no cash; DVSE, DRIP)

While this document focuses on the files detailed above, the participant user is strongly encouraged to also read through the related documentation found in section 1.3.

## 1.2 Validity

This document is valid for client/participant users.

## 1.3 References

[User Guide](#)

[Tax Guide Belgium](#)

[Tax Guide France](#)

## 1.4 Glossary

Below is a definition of terms used in the document. If not otherwise specified:

- All times used in this document are in Central European Time (CET).

| Terms                | Definitions                 |
|----------------------|-----------------------------|
| <b>ES-MIL</b>        | Euronext Securities Milan   |
| <b>ES-MIL Client</b> | Participant                 |
| <b>RD</b>            | Record Date                 |
| <b>BO</b>            | Beneficial Owner            |
| <b>CA Event</b>      | Corporate Action Event      |
| <b>PD</b>            | Payment Date                |
| <b>PoA</b>           | Power of Attorney           |
| <b>CoR</b>           | Country of residence        |
| <b>DVCA</b>          | Cash Dividend event         |
| <b>DVSE</b>          | Stock Dividend event        |
| <b>DVOP</b>          | Dividend Option event       |
| <b>DRIP</b>          | Dividend Reinvestment event |
| <b>UI</b>            | User Interface              |
| <b>RaS</b>           | Relief at Source            |

## 2. CLIENT CONFIGURATION

Before creating any beneficial owner (BO) profiles or uploading any client specific document types, the participant must map their definitions to the Euronext Securities Tax System's definitions. This is a collaborative effort between the client and Euronext Securities. During onboarding, the client will receive more information on the process of configuration.

### 2.1 Document types

Euronext Securities establishes new client-specific document types and maps them to the Euronext Securities Tax System's internal document types. When a client submits documents electronically using their own document type codes, the system can consequently recognise these codes and associate each document with the appropriate internal document type. Once all relevant documents have been uploaded and mapped, the system reviews the valid documents linked to each BO profile. This mapping process is managed through the MDT configuration tool, using the "External Config" table to ensure that client-specific document types are accurately and flexibly mapped to the internal document definitions.

### 2.2 BO Types

As part of the configuration process, the Euronext Securities support team sets up client-specific BO types and maps them to the Euronext Securities Tax System's internal BO type definitions. This ensures that when a client submits BO data using their own BO type codes, the system can recognise these codes and accurately map them to the corresponding internal BO types.

Once a BO profile is created and the relevant documentation has been uploaded by the client, the system is able to identify the type of beneficial owner and verify the associated documents.

## 3. FILE SPECIFICATIONS

### 3.1 BO Profile

#### Description and intended use:

The provision of tax relief services around withholding tax is geared around the ability to determine the applicable tax rate per market and instrument based on the beneficial owner profile.

The profile includes several properties (for example, type of investor, country of tax residence) which, combined with market tax rules, allow the evaluation of the tax status per market and instrument type, and consequently the tax relief for which the relevant BO is eligible. To see which fields are mandatory, please see section 6.

BO Profiles in the Euronext Securities Tax System must be configured to enable the system to evaluate the BO's tax status on Belgian and French equity income events.

The system supports bulk uploads, meaning the basic data required to create the profiles of multiple investors can be row-by-row.

#### Upload timing:

The BO Profile file is required at the initial stage of the process, as it is instrumental to the creation of a BO Profile. file is required at the initial stage of the process, as it is instrumental to the creation of a BO Profile.

If changes are needed at a later date, the user can edit an existing BO Profile via the UI or SFTP. To see how to edit via the UI, please refer to the 1.3. To see which fields are editable, please refer to section 6.

#### File name format:

Participant name\_BO\_Data\_F[File Date]\_[File Sequence Number].CSV, where [File Date] is in "YYYYMMDD" format and [File Sequence Number] is an incremental value per each file date

Example: BNYM\_BO\_Data\_F20251009\_001.CSV

### 3.2 BO Document Report

#### Description and intended use:

Once the BO Profile has been created, the BO Profile is enriched with electronic (PDF) copies of documents, along with market and document-specific information that is required according to the rules and requirements of Tax Authorities to grant Withholding Tax (WHT) relief at source. All relevant information included in the PDFs is presented within the BO Document Report file.

Participants must upload the necessary PDFs, and the corresponding fields will be included in the BO Document Report file, as detailed in 7.2. For example, if a user uploads 10 different PDFs, there must be a corresponding 10 rows in the BO document report. For the PDFs, no templates are provided as they are dependent on BO and region. The documents necessary for the supported regions can be seen in the Tax guide.

#### **File name format:**

Participant name\_BO\_F[File Date]\_[File Sequence Number].CSV, where [File Date] is in "YYYYMMDD" format and [File Sequence Number]\_MT is an incremental value per each file date

Example: BONY\_BO\_F20251009\_001\_MT.CSV

More information on what each field in the BO document report contains can be found in BO Document Report

#### **Upload timing:**

The file can be uploaded at any time before reconciliation begins, to obtain the optimal tax relief rate. Please refer to 1.3 to see what the reconciliation window is for your region.

## **3.3 Tax Breakdown File\_Cash Leg(csv) DVCA and DVOP Cash**

#### **Description and intended use:**

Where a participant holds assets in its account at Euronext Securities Milan on behalf of multiple beneficial owners who may be entitled to different rates of tax relief, the participant must provide an account holdings breakdown for each beneficial owner. This holdings breakdown, together with the BO Tax Status, enables the calculation of payable and withheld amounts for each beneficial owner.

The file contains a breakdown of positions held in the instrument per BO (each file can refer to multiple CSD accounts), including the Tax ID and residence, so as to enable the system to match the holdings to the correct BO Profiles, and subsequently calculate how much net dividend must be paid out, and equally how much tax must be withheld by

Euronext Securities Milan for each BO. These calculations at BO level constitute the content of the compliance reporting to the Tax Authorities.

The breakdown file can also be used by the participant to revert BO positions during each markets defined reversal window (see 1.3). The participant may want to change information/data on:

- Any BOs where the payment is to be reversed (referencing them by their BO Tax ID and BO Country)
- Account where the securities were held on RD
- RD holdings and expected tax rate to be applied

For Belgian equities, the following event types are within scope:

- DVCA

For French equities, the following event types are within scope:

- DVCA
- DVOP (Cash leg)

#### Upload timing:

The Tax breakdown file can be uploaded as soon as a CA Event has been created until end of the day of Record Date.

The reversal Tax breakdown file can be uploaded during the defined reversal window. Please refer to 1.3 to see what windows are defined for your region.

#### File name format:

[Participant Name]\_CERT\_[ISIN]\_P[Payment Date]\_F[File Date]\_[File Sequence Number].CSV

Where [Payment Date] and [File Date] are in "YYYYMMDD" format and [File Sequence Number] is an incremental value per each file date.

Example: BNYM\_CERT\_BE1234567890\_P20251025\_F20251009\_001.CSV

## 3.4 Tax Breakdown file\_Security Leg – DVOP noncash, DVSE, DRIP (csv)

#### Description and intended use:

The securities leg breakdown file is used to report stock dividend (non-cash) distributions at beneficial owner level. The file is in CSV format and is uploaded via SFTP or UI to the tax platform.



The file enables Euronext Securities Milan to:

- Determine the value of assigned shares based on the applicable market price.
- Calculate the tax amount due for each beneficial owner included in the file.
- Generate and provide a tax report to the participant, detailing tax applied per beneficial owner.
- Debit the participant's cash account for the total tax amount due (debit confirmation issued via SWIFT MT565 message with reconciliation reference).

Reversal Handling:

Tax reversal is not applicable to the securities leg.

For French equities, the following event types are within scope:

- DVOP (Security Leg)
- DVSE
- DRIP

### Upload timing:

The Tax breakdown file can be uploaded as soon as a CA Event has been created until end of the day of Market Deadline Date. Please refer to the 1.3 to see what windows are defined for your region.

### File name format:

[Participant Name]\_CA\_[CA Event Ref number]\_F[File Date]\_[File Sequence Number].CSV

Where [File Date] are in "YYYYMMDD" format and [File Sequence Number] is an incremental value per each file date.

Example: BNYM\_CA\_26779999\_F20251009\_001.CSV

## 4. UPLOAD PROCESS

### 4.1 File Upload Process

The participant may upload the relevant files via SFTP or through the dedicated User Interface (UI):

- For UI upload details refer to the dedicated User Guide document
- For SFTP details see section 6 of this document

#### **File submission:**

Participants can upload the files via their preferred access channel, SFTP or UI. The system then performs validation checks, both formal and structural.

#### **Validation flow and file storage:**

##### **First-Level validation:**

- The SFTP upload system checks both formal and structural validation rules simultaneously (first-level validation). If the file fails any validations, the file is saved as REJECTED in data import page, and the participant receives a notification email. If the file passes first-level validation checks, then it is saved in data Import page as PENDING, meaning it is ready for second-level validation.
- The UI upload system separates the first-level validation into two different stages:
  - Pre upload check: File name, file size and file format  
If any file fails this step, there will be UI feedback to inform the user that the file is not processed further and will not be saved. If the file passes this check the validation continues to the post upload check
  - Post upload check: File Header columns - Must match the expected format defined in the specific template.  
Once the system performs this check the file will be saved in Data Import page as PENDING or REJECTED based on the result. If rejected, the participant will receive a notification email.

##### **Second-Level validation:**

Whatever the chosen upload method, the second-level validation will remain the same:

Once the file is in PENDING status, the system performs the row-by-row validation (based on the rules defined in each template). After completion of second-level validation, the file status is set to COMPLETED (file parsed with results: successful/error rows).

Note: Only records that have passed the second-level validation successfully will be processed and display in the dedicated page. Records containing errors can be reviewed via a dedicated error report in the Data Import page. User will receive an email notification to be informed that the file has been successfully uploaded, and the status is set to COMPLETED. To see if any error exists in the upload, the user is encouraged to check the Data Import Page to download potential erroneous rows. To learn more about the process of uploading via the UI, please refer to 1.3.

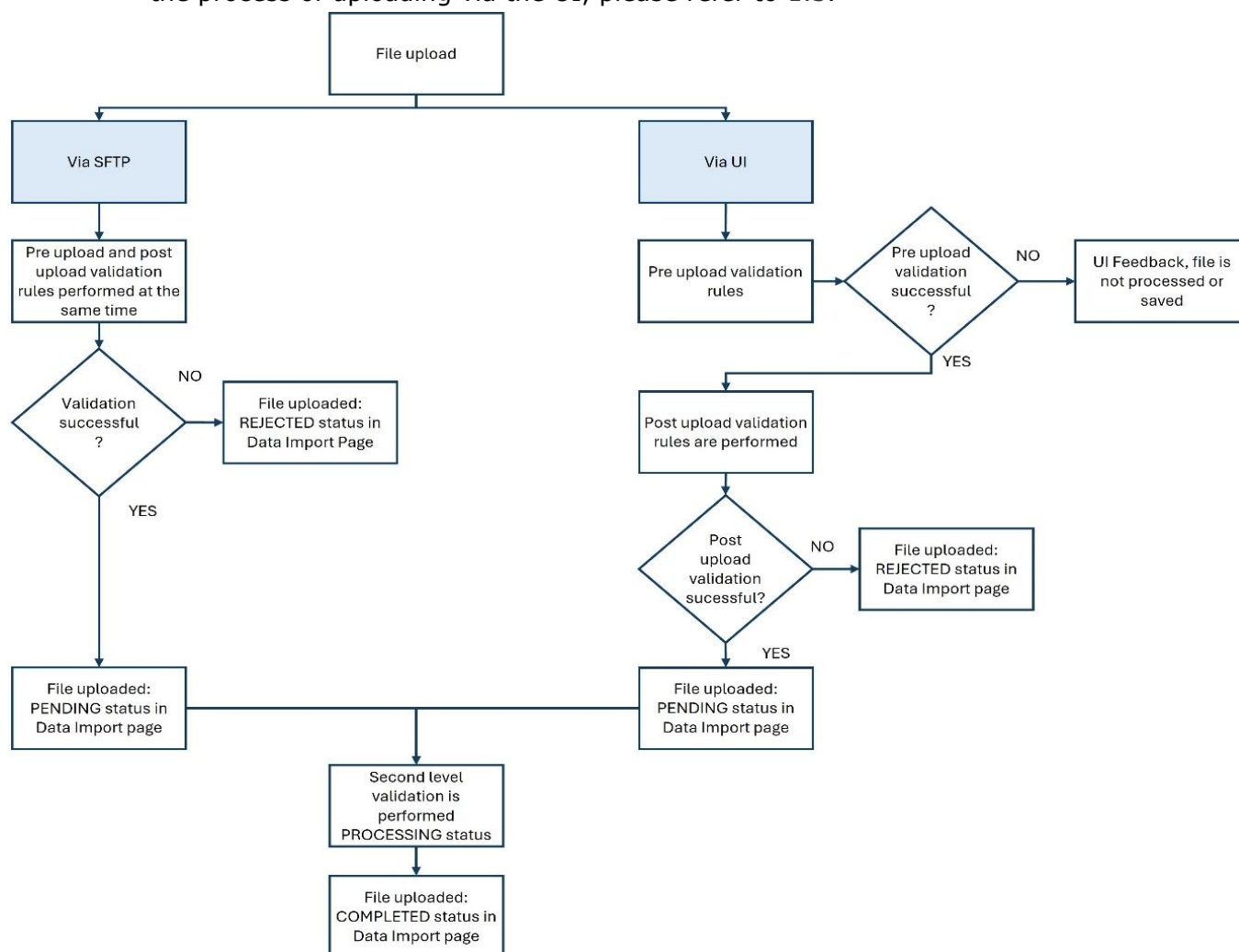


Figure 1 - Upload process

## 5. FILE VALIDATION RULES

### 5.1 UI Upload

#### First-level validation rules:

- Pre upload validations rules:
  - File Name (Please see file name format in section Tax Breakdown)
  - File Format
  - File Size
  - If file fails, the pre-upload validation rule, an error message will be shown from UI and no file is uploaded successfully
- Post upload validations rules:
  - File Header columns - Must match the expected format defined in the specific template
  - For Tax breakdown file: The **ISIN + PD combination** must be a valid one based on the CA event created in the system
  - For Tax breakdown (Security leg) file: Only first-level validation is performed

#### Second-level validation rules:

This check verifies the correct format of each field in the file, as specified in the dedicated table in paragraph 7.

### 5.2 SFTP Upload

#### First-level validation rules:

- File Name (Please see file name format in section Tax Breakdown)
- File Format - must be CSV file
- File Size
- File Header columns - Must match the expected format defined in the template
- For Tax breakdown (Cash Leg) file: The **ISIN + PD combination** must be a valid one based on the CA event created in the system
- For Tax breakdown (Security leg) file: Only first-level validation is performed

Validate at the same time and feedback is sent via email. The file is always saved in Data Import page.

#### Second-level validation rules:

This check consists in verifying the correct format of each field in the file, as specified in the dedicated table in section 7.

## 6. SFTP

Each client is assigned a dedicated folder, which is automatically linked to their credentials. Clients only have access to their specific folder and do not need to navigate to other directories. Upon logging in, they simply upload their files; the system verifies the client's identity and file type, then processes the upload accordingly.

During onboarding, clients are provided with the URL for connection and instructions to establish their SSH connection. More information will be provided during the onboarding.

## 7. FILE TEMPLATES

The templates below function as legends, describing each field's purpose and format. Please refer to section 8 of this document for templates containing only the header fields.

### 7.1 BO Profile

The table below describes each field and its use case. All fields are editable except "BO Tax ID (ID 4)" and "BO Tax Residence (ID 9)". If a participant wishes to edit these fields, a new BO profile must be created.

Table 1 - BO Profile

| ID | FIELD NAME    | LENGTH                 | FIELD REQUIREMENT   | FORMAT        | DESCRIPTION   | MARKET      |
|----|---------------|------------------------|---|---------------|---|-------------|
| 1  | BO Type       | N/A - choose from list | Mandatory   | List          | Indicates the type of beneficial owner  | All Markets |
| 2  | BO First Name | 1 to 128               | Mandatory   | Alpha-Numeric | The legal first name of the beneficial owner  | All Markets |
| 3  | BO Last Name  | 1 to 128               | Mandatory if BO type is Individual<br>Optional if BO type is NOT Individual | Alpha-Numeric | The legal last name or family name of the beneficial owner.<br>If the BO Type is NOT Individual, this field can be optional | All Markets |
| 4  | BO Tax ID     | 1 to 64                | Mandatory   | Alpha-Numeric | The unique taxpayer identification number assigned to the beneficial owner by their tax authority.<br><b>Not editable</b>   | All Markets |
| 5  | BO Address    | 1 to 128               | Mandatory   | Alpha-Numeric | The full residential or legal address of the beneficial owner   | All Markets |

|    |                             |                        |           |                  |  |             |
|----|-----------------------------|------------------------|-----------|------------------|--|-------------|
| 6  | BO City                     | 1 to 64                | Mandatory | Alpha-Numeric    | The city of the beneficial owner's address   | All Markets |
| 7  | BO Post Code                | 1 to 32                | Mandatory | Alpha-Numeric    | The postal code of the beneficial owner's address  | All Markets |
| 8  | BO State                    | 1 to 64                | Optional  | Alpha-Numeric    | The state, province, or region of the beneficial owner's address   | All Markets |
| 9  | BO Tax Residence            | N/A - choose from list | Mandatory | List             | The country or countries where the beneficial owner is considered a tax resident.<br><b>Not editable</b> | All Markets |
| 10 | BO Tax ID Issuing Authority | 1 to 128               | Optional  | Alpha-Numeric    | The government or agency responsible for issuing the tax identification number                           | All Markets |
| 11 | BO Gender                   | N/A - choose from list | Optional  | List             | The gender of the beneficial owner   | All Markets |
| 12 | BO Date of Birth            | 10                     | Optional  | Date: yyyy/mm/dd | The date of birth of the beneficial owner  | All Markets |
| 13 | BO City of Birth            | 1 to 64                | Optional  | Alpha-Numeric    | The city where the beneficial owner was born   | All Markets |



|    |                            |                        |          |               |   |             |
|----|----------------------------|------------------------|----------|---------------|---|-------------|
| 14 | BO Country Of Birth        | N/A - choose from list | Optional | List          | The country where the beneficial owner was born                                   | All Markets |
| 15 | Managing Company Name      | 1 to 128               | Optional | Alpha-Numeric | The legal name of the company managing the beneficial owner's assets or interests | All Markets |
| 16 | Managing Company Tax ID    | 1 to 64                | Optional | Alpha-Numeric | The taxpayer identification number of the managing company                        | All Markets |
| 17 | Managing Company Address   | 1 to 128               | Optional | Alpha-Numeric | The full legal address of the managing company                                    | All Markets |
| 18 | Managing Company City      | 1 to 64                | Optional | Alpha-Numeric | The city of the managing company's address  | All Markets |
| 19 | Managing Company Post Code | 1 to 32                | Optional | Alpha-Numeric | The postal code of the managing company's address                                 | All Markets |
| 20 | Managing Company State     | 1 to 64                | Optional | Alpha-Numeric | The state, province, or region of the managing company's address                  | All Markets |
| 21 | Managing Company Country   | N/A - choose from list | Optional | List          | The country where the managing company is registered or operates                  | All Markets |

## 7.2 BO Document Report

The following template must be used for sharing the BO Document report with the information linked to the uploaded PDFs.

For each market and each PDF document, the “Depends on Document type set up in market data” fields may become mandatory. Please refer to Table 3 - Belgium BO Documents and Table 4 - France BO Documents, for more information specific to each region.

During the file upload process, the second-level validation (row by row) is performed only on the **seven mandatory fields**. In the event of a formatting error in any of these fields, the record will not be processed.

The remaining fields, particularly those that may become mandatory depending on the type of pdf document to which the record is referring, are checked in a subsequent phase, once the document has been uploaded and is available on the dedicated page (*BO Documents*). If errors are detected in those fields, the document status will be set to “Need review” status, so that the user can act to correct the BO metadata fields.

Table 2 - BO document report

| ID | FIELD NAME                | LENGTH   | FIELD REQUIREMENT  | FORMAT                       | DESCRIPTION   | MARKET      |
|----|---------------------------|----------|--|------------------------------|---|-------------|
| 1  | Doc scan reference number | 1 to 128 | Mandatory  | Alpha-Numeric                | Unique reference ID used to link the corresponding PDF                                | All Markets |
| 2  | Document Name             | 1 to 128 | Mandatory  | Alpha-Numeric                | Name of the document  | All Markets |
| 3  | Document Date             | 1 to 10  | Mandatory  | 10 characters: YYYY/MM/DD    | The Document execution Date   | All Markets |
| 4  | Document type             | 1 to 64  | Mandatory  | Alpha-Numeric                | Type of document (e.g. COR)   | All Markets |
| 5  | Tax Year                  |          | Mandatory  | YYYY                         | Applicable tax year   | All Markets |
| 6  | BO Tax ID                 | 1 to 64  | Mandatory  | Alpha-Numeric                | Beneficial Owner's tax ID (used to associate with the corresponding BO)               | All Markets |
| 7  | BO Tax Residence          | 1 to 2   | Mandatory  | 2-character country ISO Code | Beneficial Owner's country of residence (used to associate with the corresponding BO) | All Markets |
| 8  | BO Type                   | 1 to 64  | Depends on Document type set up in market data (see below section) | Alpha-Numeric                | Beneficials owner type  | All Markets |

|    |                     |          |  |                              |   |                            |
|----|---------------------|----------|--|------------------------------|---|----------------------------|
| 9  | BO Full Name        | 1 to 128 | Depends on Document type set up in market data (see below section) | Alpha-Numeric                | Full Name of Beneficial Owner   | All Markets                |
| 10 | BO Address          | 1 to 128 | Depends on Document type set up in market data (see below section) | Alpha-Numeric                | Address of Beneficial Owner   | All Markets                |
| 11 | BO Postal code      | 1 to 64  | Depends on Document type set up in market data (see below section) | Alpha-Numeric                | Postal Code of Beneficial owner   | All Markets                |
| 12 | BO City             | 1 to 64  | Depends on Document type set up in market data (see below section) | Alpha-Numeric                | City of Beneficial Owner  | All Markets                |
| 13 | BO Gender           | 1 to 10  | Depends on Document type set up in market data (see below section) | Alpha-Numeric                | Gender of the beneficial owner  | Specific to Italian Market |
| 14 | BO Date of Birth    | 1 to 10  | Depends on Document type set up in market data (see below section) | 10 characters: YYYY/MM/DD    | Date of birth of the beneficial owner   | Specific to Italian Market |
| 15 | BO City of Birth    | 1 to 64  | Depends on Document type set up in market data (see below section) | Alpha-Numeric                | City or birth of the beneficial owner   | Specific to Italian Market |
| 16 | BO Country Of Birth | 1 to 12  | Depends on Document type set up in market data (see below section) | 2-character country ISO Code | Country of birth of the beneficial owner  | Specific to Italian Market |
| 17 | Name of Signatory   | 1 to 128 | Depends on Document type set up in market data (see below section) | Alpha-Numeric                | The full name of the individual authorised to sign the document on behalf of the declaring entity | All Markets                |

|    |                           |          |  |                              |   |                            |
|----|---------------------------|----------|--|------------------------------|---|----------------------------|
| 18 | Position                  | 1 to 64  | Depends on Document type set up in market data (see below section) | Number with up to 2 decimals | The number of positions held by Beneficial Owner  | All Markets                |
| 19 | Authorised representative | 1 to 128 | Depends on Document type set up in market data (see below section) | Alpha-Numeric                | The person who is legally empowered to sign the form on behalf of the beneficial owner or the intermediary                        | All Markets                |
| 20 | Place & Date              | 1 to 10  | Depends on Document type set up in market data (see below section) | YYYYMMDD                     | The <b>date</b> when the form was signed  | All Markets                |
| 21 | Witness's Name            | 1 to 128 | Depends on Document type set up in market data (see below section) | Alpha-Numeric                | The individual who witnesses the signing of the document, confirming that the signature was made by the authorised representative | All Markets                |
| 22 | Currency                  | 1 to 64  | Depends on Document type set up in market data (see below section) | Alpha-Numeric                | The currency in which the income (dividend or interest) is paid   | Specific to Belgian Market |
| 23 | Issuer Name               | 1 to 128 | Depends on Document type set up in market data (see below section) | Alpha-Numeric                | The name of the company or entity that issued the security paying the dividend or interest  | Specific to Belgian Market |
| 24 | Issuer Address            | 1 to 128 | Depends on Document type set up in market data (see below section) | Alpha-Numeric                | The address of the company or entity that issued the security paying the dividend or interest                                     | Specific to Belgian Market |
| 25 | Issuer Tax ID             | 1 to 64  | Depends on Document type set up in market data (see below section) | Alpha-Numeric                | The tax ID of the company or entity that issued the security paying the dividend or interest                                      | Specific to Belgian Market |

|    |                      |         |  |                              |   |                            |
|----|----------------------|---------|--|------------------------------|---|----------------------------|
| 26 | Nature of the shares | 1 to 64 | Depends on Document type set up in market data (see below section) | Alpha-Numeric                | The type or class of shares for which the dividend is paid  | Specific to Belgian Market |
| 27 | Date of issue        | 1 to 10 | Depends on Document type set up in market data (see below section) | 10 characters: YYYY/MM/DD    | The original issuance date of the security It provides reference for the instrument's age and issue details   | Specific to Belgian Market |
| 28 | Payable date         | 1 to 10 | Depends on Document type set up in market data (see below section) | 10 characters: YYYY/MM/DD    | The payment date on which the income becomes due and payable to investors   | Specific to Belgian Market |
| 29 | Coupon Number        | 1 to 20 | Depends on Document type set up in market data (see below section) | Number                       | The specific coupon or dividend distribution associated with the payment. For equities, this corresponds to a dividend number   | Specific to Belgian Market |
| 30 | Number of coupons    | 1 to 20 | Depends on Document type set up in market data (see below section) | Number with up to 2 decimals | The total number of coupons attached to the instrument or associated with the income payment  | Specific to Belgian Market |
| 31 | Net Div value        | 1 to 20 | Depends on Document type set up in market data (see below section) | Number with up to 2 decimals | The net amount of dividend due to the beneficial owner after withholding tax has been deducted. It represents what the investor actually receives per share or per position | Specific to Belgian Market |
| 32 | Total Net Div        | 1 to 20 | Depends on Document type set up in market data (see below section) | Number with up to 2 decimals | The total net payment amount across all eligible shares or positions for that beneficial owner. This equals <i>Net Dividend Value</i> × <i>Number of Shares Held</i>        | Specific to Belgian Market |
| 33 | Account Number       | 1 to 64 | Depends on Document type set up in market data (see below section) | Alpha-Numeric                | The domestic account number where the payment will be made. Used when the payment is to be credited to a  | All Markets                |

|    |                             |          |  |                                  |  |                            |
|----|-----------------------------|----------|--|----------------------------------|--|----------------------------|
|    |                             |          |  |                                  | local account that may not require full IBAN format  |                            |
| 34 | IBAN                        | 1 to 34  | Depends on Document type set up in market data (see below section) | Up to 34 alphanumeric characters | The international bank account identifier for the payment destination  | Specific to Belgian Market |
| 35 | BIC                         | 1 to 11  | Depends on Document type set up in market data (see below section) | Up to 11 alphanumeric characters | The international bank code used to identify the recipient's bank in global payment networks. Required for cross-border transfers                          | Specific to Belgian Market |
| 36 | Opened in the name of       | 1 to 128 | Depends on Document type set up in market data (see below section) | Alpha-Numeric                    | The account holder's name  | Specific to Belgian Market |
| 37 | Communication               | 1 to 128 | Depends on Document type set up in market data (see below section) | Alpha-Numeric                    | The payment reference or message included with the transfer  | Specific to Belgian Market |
| 38 | Possible conditions         | 1 to 128 | Depends on Document type set up in market data (see below section) | Alpha-Numeric                    | Refers to the tax condition or exemption type applicable to the beneficial owner under the relevant tax treaty or domestic law                             | Specific to Belgian Market |
| 39 | Document attached           | 1 to 128 | Depends on Document type set up in market data (see below section) | Alpha-Numeric                    | Indicates whether a supporting document (e.g. Certificate of Residence, self-declaration, or intermediary statement) is attached to the submission         | Specific to Belgian Market |
| 40 | BO Tax ID Issuing Authority | 1 to 1   | Depends on Document type set up in market data (see below section) | Numeric                          | Specifies the authority or agency that issued the Beneficial Owner's Tax Identification Number. This ensures that the BO's tax ID is valid and issued by a | Specific to Italian Market |

|    |                            |          |  |                              |  |                            |
|----|----------------------------|----------|--|------------------------------|--|----------------------------|
|    |                            |          |  |                              | recognised national authority  |                            |
| 41 | Managing Company Name      | 1 to 128 | Depends on Document type set up in market data (see below section) | Alpha-Numeric                | The fund management company responsible for the investment or intermediary relationship.                 | Specific to Italian Market |
| 42 | Managing Company Tax ID    | 1 to 128 | Depends on Document type set up in market data (see below section) | Alpha-Numeric                | The tax ID of the fund management company responsible for the investment or intermediary relationship    | Specific to Italian Market |
| 43 | Managing Company Address   | 1 to 128 | Depends on Document type set up in market data (see below section) | Alpha-Numeric                | The address of the fund management company responsible for the investment or intermediary relationship   | Specific to Italian Market |
| 44 | Managing Company City      | 1 to 64  | Depends on Document type set up in market data (see below section) | Alpha-Numeric                | The city of the fund management company responsible for the investment or intermediary relationship      | Specific to Italian Market |
| 45 | Managing Company Post Code | 1 to 64  | Depends on Document type set up in market data (see below section) | Alpha-Numeric                | The post code of the fund management company responsible for the investment or intermediary relationship | Specific to Italian Market |
| 46 | Managing Company State     | 1 to 64  | Depends on Document type set up in market data (see below section) | Alpha-Numeric                | The state of the fund management company responsible for the investment or intermediary relationship     | Specific to Italian Market |
| 47 | Managing Company Country   | 1 to 2   | Depends on Document type set up in market data (see below section) | 2-character country ISO Code | The country of the fund management company responsible for the investment or intermediary relationship   | Specific to Italian Market |

|    |                                 |          |  |               |  |                           |
|----|---------------------------------|----------|--|---------------|--|---------------------------|
| 48 | Paying institution name         | 1 to 128 | Depends on Document type set up in market data (see below section) | Alpha-Numeric | The financial institution responsible for distributing the dividends to investors                    | Specific to French Market |
| 49 | Paying institution Address      | 1 to 128 | Depends on Document type set up in market data (see below section) | Alpha-Numeric | The address of the financial institution responsible for distributing the dividends to investors     | Specific to French Market |
| 50 | Paying institution SIREN number | 1 to 128 | Depends on Document type set up in market data (see below section) | Alpha-Numeric | The unique French business identification number (SIREN) assigned by INSEE to the paying institution | Specific to French Market |

### 7.2.1. Belgium: required document fields

The table below describes which PDF corresponds to which field in the BO Document Report, and whether the field is mandatory or optional.

Table 3 - Belgium BO Documents

| DOCUMENT                   | FIELDS THAT NEED TO BE EXTRACTED FROM DOCUMENT | FIELD REQUIREMENT |
|----------------------------|--|-------------------|
| <b>CoR</b>                 | BO Full Name                                   | Mandatory         |
|                            | BO Address                                     | Mandatory         |
|                            | BO Tax ID                                      | Mandatory         |
|                            | BO Tax Residence                               | Mandatory         |
|                            | Tax Year                                       | Mandatory         |
|                            | Date of Issue                                  | Mandatory         |
|                            | Name of Signatory                              | Mandatory         |
|                            | Position                                       | Mandatory         |
| <b>PoA</b>                 | BO Full Name                                   | Mandatory         |
|                            | BO Tax ID                                      | Mandatory         |
|                            | BO Tax Residence                               | Mandatory         |
|                            | Authorised Signer Name                         | Mandatory         |
|                            | Position                                       | Mandatory         |
|                            | Date   | Mandatory         |
|                            | Witness' name                                  | Mandatory         |
| <b>BO Declaration form</b> | BO Tax Residence                               | Mandatory         |
|                            | BO Full Name                                   | Mandatory         |
|                            | BO Tax ID                                      | Mandatory         |
|                            | BO Full Address                                | Mandatory         |
|                            | BO Type of legal entity                        | Mandatory         |



|                     |  |           |
|---------------------|--|-----------|
| <b>Form 276 Div</b> | Name and title of the beneficial owner or of its authorised representative                     | Mandatory |
|                     | Place and Date   | Mandatory |
|                     | BO Tax Residence   | Mandatory |
|                     | Currency   | Mandatory |
|                     | Name or firm of the Belgium Debtor Of the dividends (Issuer Name)                              | Mandatory |
|                     | Address or registered office (Issuer Address)  | Mandatory |
|                     | VAT Number (Issuer Tax ID)   | Mandatory |
|                     | BO Full Name   | Mandatory |
|                     | BO Tax ID  | Mandatory |
|                     | BO Type  | Mandatory |
|                     | BO Full Address  | Mandatory |
|                     | BO Postal Code   | Mandatory |
|                     | BO City  | Mandatory |
|                     | Nature and form of the shares (e.g. Ordinary share)  | Mandatory |
|                     | Date Of issue  | Optional  |
|                     | Payable Date (Payment Date)  | Mandatory |
|                     | Coupon Number  | Mandatory |
|                     | Number of Coupons  | Mandatory |
|                     | Net Dividend per coupon  | Mandatory |
|                     | Total Net Dividend   | Mandatory |
|                     | On Account Nr (Account Number)   | Optional  |
|                     | IBAN   | Optional  |
|                     | BIC  | Optional  |
|                     | Opened in the name of  | Mandatory |
|                     | Communication  | Mandatory |
|                     | Possible Particular conditions   | Optional  |
|                     | Name, capacity and address of the duly authorised representative eventually signing this claim | Mandatory |
|                     | Date of signature of the beneficial owner or his representative                                | Mandatory |
|                     | Documents attached (number and nature)   | Mandatory |

### 7.2.2. France: required document fields

The table below describes where each field used in the BO Document Report is extracted from, and whether the field is mandatory or optional.

Table 4 - France BO Documents

| DOCUMENT                  | FIELDS THAT NEED TO BE EXTRACTED FROM DOC                       | FIELD REQUIREMENT |
|---------------------------|---|-------------------|
| <b>FR CoR (Form 5000)</b> | BO Full Name (Business Name)                                    | Mandatory         |
|                           | Occupation / Legal form- Full home address or registered office | Optional          |
|                           | Email   | Optional          |
|                           | BO Type   | Mandatory         |
|                           | BO Address  | Mandatory         |
|                           | BO Tax ID   | Mandatory         |

|                            |  |           |
|----------------------------|--|-----------|
|                            | BO Tax Residence   | Mandatory |
|                            | Tax Year   | Mandatory |
|                            | Signature of the beneficial owner or of his/her authorised representative  | Mandatory |
|                            | Place and Date   | Mandatory |
|                            | Name of Signatory  | Mandatory |
|                            | Paying institution Name  | Optional  |
|                            | Paying institution Address   | Optional  |
|                            | Paying institution SIREN number  | Optional  |
| <b>PoA</b>                 | BO Full Name   | Mandatory |
|                            | BO Tax ID  | Mandatory |
|                            | BO Tax Residence   | Mandatory |
|                            | Authorised Signer Name   | Mandatory |
|                            | Position   | Mandatory |
|                            | Date   | Mandatory |
|                            | Witness's name   | Mandatory |
| <b>BO Declaration form</b> | BO Tax Residence   | Mandatory |
|                            | BO Full Name   | Mandatory |
|                            | BO Tax ID  | Mandatory |
|                            | BO Full Address  | Mandatory |
|                            | BO Type of legal entity  | Mandatory |
|                            | Name and title of the beneficial owner or of its authorised representative | Mandatory |
|                            | Place and Date   | Mandatory |

## 7.3 Tax Breakdown file\_Cash Leg(csv) DVCA and DVOP Cash

The following template must be used to provide the account holdings breakdown per BO when a DVCA or DVOP/CASH event is announced. Each file can refer to multiple CSD Accounts.

Table 5 - Tax Breakdown File DVCA and DVOP Cash

| ID | FIELD NAME         | LENGTH | FIELD REQUIREMENT | FORMAT              | DESCRIPTION                 | MARKET      |
|----|--------------------|--------|-------------------|---------------------|-----------------------------|-------------|
| 1  | T2S Account Number | 35     | Mandatory         | Up to 35 characters | The MT account number (T2S) | All Markets |
| 2  | ISIN               | 12     | Mandatory         | Up to 12 characters | ISIN of the security        | All Markets |

|    |                                 |     |           |                              |  |             |
|----|---------------------------------|-----|-----------|------------------------------|--|-------------|
| 3  | Payment Date                    | 10  | Mandatory | 10 characters: YYYY/MM/DD    | Date of dividend payment   | All Markets |
| 4  | Total Account Position Reported | 20  | Mandatory | Number with up to 2 decimals | Total security holdings of the MT account                                | All Markets |
| 5  | Position Certified              | 20  | Mandatory | Number with up to 2 decimals | Total security holdings of the Beneficial Owner                          | All Markets |
| 6  | BO Tax ID                       | 50  | Mandatory | Up to 50 characters or DUMMY | Actual Tax ID or Manufactured Tax ID or "DUMMY" for uncertified holdings | All Markets |
| 7  | BO Tax residence country        | 2   | Mandatory | 2-character country ISO code | Country ISO code of fiscal residence of the BO                           | All Markets |
| 8  | Certification Status            | 4   | Mandatory | Always "CERT"                | The certification status   | All Markets |
| 9  | Expected Applicable Tax Rate    | 6   | Mandatory | Number with up to 4 decimals | The percentage tax rate to be applied based on the valid certification   | All Markets |
| 10 | Internal Account Number         | 50  | Optional  | Up to 50 characters          | Participant Specific Internal Account Number                             | All Markets |
| 11 | BO Full Name                    | 120 | Optional  | Up to 120 characters         | Full Name of the BO  | All Markets |
| 12 | Internal Event Reference        | 50  | Optional  | Up to 50 characters          | Participant Specific Internal Event Reference Number                     | All Markets |

## 7.4 Tax Breakdown file\_Security Leg– DVOP non cash, DVSE, DRIP (csv)

Please note that only first-level validation is performed for this file.

Table 6 - Tax breakdown file II

| ID | FIELD NAME        | LENGTH | FIELD REQUIREMENT | FORMAT                         | DESCRIPTION  | MARKET      |
|----|-------------------|--------|-------------------|--------------------------------|--|-------------|
| 1  | CA_Event_Ref      | 22     | Mandatory         | Up to 22 characters            | The CA event reference number  | All Markets |
| 2  | CSD_Acc_No        | 22     | Mandatory         | Up to 22 characters            | The MT account number (T2S)  | All Markets |
| 3  | ISIN              | 12     | Mandatory         | Up to 12 characters            | ISIN of the security   | All Markets |
| 4  | CA_Option_Number  | 10     | Mandatory         | Up to 10 characters            | The Corporate Action Option Number (CAON)                                | All Markets |
| 5  | CSD_Acc_Total_Amt | 20     | Mandatory         | Number with up to 2 decimals   | Total security holdings instructed for the specified option              | All Markets |
| 6  | BO_Tax_ID         | 50     | Mandatory         | Up to 50 characters or "DUMMY" | Actual Tax ID or Manufactured Tax ID or "DUMMY" for uncertified holdings | All Markets |
| 7  | BO_Country        | 2      | Mandatory         | 2-character country ISO Code   | Country ISO code of fiscal residence of the BO                           | All Markets |
| 8  | BO_Amt            | 20     | Mandatory         | Number with up to 2 decimals   | Total security holdings of the Beneficial Owner                          | All Markets |

|    |               |     |           |                        |  |             |
|----|---------------|-----|-----------|------------------------|--|-------------|
|    |               |     |           |                        |  |             |
| 9  | Tax_Rate      | 6   | Mandatory | Number with 4 decimals | The percentage tax rate to be applied based on the valid certification | All Markets |
| 10 | Int_Acc_No    | 50  | Optional  | Up to 50 characters    | Participant Specific Internal Account Number                           | All Markets |
| 11 | BO_Full_Name  | 150 | Optional  | Up to 150 characters   | Full Name of the BO  | All Markets |
| 12 | Int_Event_Ref | 50  | Optional  | Up to 50 characters    | Participant Specific Internal Event Reference Number                   | All Markets |

## 8. Appendix

For details on accessing predefined csv-templates for all different file types, please refer to [EE RaS Data Dictionary Template.xlsx](#)



**EURONEXT SECURITIES**

[euronext.com/csd](https://euronext.com/csd)