

EQUITY EQUITY DER - METHODOLOGIES FOR DETERMINING INITIAL MARGINS

MANUAL

Version 2.1 as of October 2021



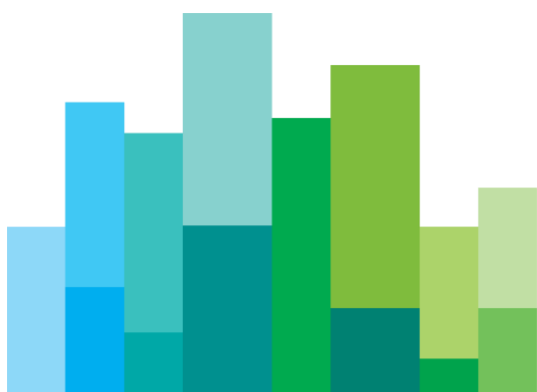
CC&G

A EURONEXT COMPANY

TABLE OF CONTENTS

- 1. Executive summary 3**
- 2. Margin calculation 5**
 - 2.1 Types of Initial Margin requirements..... 6**
 - 2.2 Netting long and short positions..... 7**
 - 2.3 Variation Margin calculation 7**
 - 2.4 Initial Margin calculation 8**
 - 2.4.1 Future straddle margin calculation..... 8
 - 2.4.2 Mark to Market margin calculation.....10
 - 2.4.3 Premium margin calculation11
 - 2.4.4 Additional Margin Calculation11
 - 2.5 Calculation of Initial Margin for the product group 15**
 - 2.6 Margins on Fail positions 15**
- 3. Attachments 16**

EXECUTIVE SUMMARY



The present document describes the methodology used to calculate Initial Margin for Equity and Equity Derivatives Section. Products: equities, warrants, convertible bonds, rights issues and shares of Closed-End Funds (CEF), Exchange Traded Funds (ETF), Exchange Traded commodities traded on EXM Markets - and derivatives contracts traded on IDEM (equities and index futures and options, futures on dividend).

2. MARGIN CALCULATION



MARS¹ methodology used by CC&G starts organizing all securities contracts - equities, warrants, convertible bonds, rights issues and shares of Closed-End Funds (CEF) and of Exchange Traded Funds (ETF) - and derivatives contracts – futures and options traded on IDEM - relating to the same underlying asset into “class groups”. Where the underlying assets for two or more class groups exhibit close price correlation, those class groups can be organized into larger “product groups”.

The positions comprising class groups and product groups are margined as integrated portfolios, which are evaluated unitarily and hence subjected to Initial Margins that are also unitarily calculated.

The risk associated with an Integrated Portfolio is assessed by hypothesizing that the shares prices change daily by a maximum percentage amount, defined as the **Margin Interval**, in a way that is adverse to the Clearing Member’s position and CC&G – in case the Clearing Member is insolvent – must liquidate the positions in the most unfavourable reasonably conjecturable market conditions within the Margin Interval.

2.1 Types of Initial Margin requirements

The methodology adopted foresees the following types of Initial Margins:

- a) **Mark-To-Market Margin**: calculated for securities positions and for stock futures positions² which have been expired³ and have not yet been settled. It has the purpose of revaluating the theoretical liquidation gains/losses to current market prices (Mark-To-Market). For equity positions it represents a theoretical credit for the clearing member that has bought/sold shares below/above current market prices, assumed equal to the reference price. On the other side, it represents a theoretical debit for the clearing member that has bought (sold) shares above (below) current market prices. For stock Future positions it represents a theoretical credit (debit) for the member who bought the futures if the settlement price is lower (higher) than the current market value, set equal to the reference price of the of the underlying, and vice versa for the member that sold the futures.
- b) **Additional Margin**: calculated for all securities positions, option positions and non-spread futures positions. It has the purpose of evaluating the maximum loss reasonably possible in the hypothesis of market price fluctuations of the underlying asset. If the risk margin component of a particular product group is less than a calculated minimum margin for the product group, then the minimum margin will be taken as the additional margin.
- c) **Premium Margins**: calculated only for stock-style options. It has the purpose of

¹ Margining System.

² The mark-to-market margin is applied to physically delivered Stock Futures.

³ On the expiration day both Variation Margins (positions re-valued at the settlement price determined at the end of trading at 9.05 a.m.), and Mark-to-Market Margins, (positions re-valued from the settlement price to the reference price of the underlying asset at the end of the day) are calculated.

revaluating the theoretical liquidation costs/revenues at the current market values (market-to-market) and therefore represents a theoretical credit⁴ for the options buyer and a theoretical debt for the seller. It is equal to the current market value of the option itself, assumed equal to the closing price that is calculated daily.

- d) **Futures Straddle Margin:** calculated only for futures positions having opposite sign on different maturities and relating to the same underlying asset (futures straddle positions). This margin is equivalent to the number of futures straddle positions multiplied by the futures straddle margin set by CC&G.

Moreover, in order to apply a significant Initial Margin even to those portfolios the ordinary Initial Margin of which is close to or equivalent to zero, a **Minimum Margin** is defined as well. Among other things, its purpose is to take into account the bid-offer spread existing on the market in the hypothesis that the positions must be liquidated.

2.2 Netting long and short positions

The first step in calculating margin requirements is to net long and short positions in the same series of options (contracts with the same underlying (symbol), put or call, expiry and strike price) or futures (contracts with the same underlying (symbol) and expiry) for each class group (contracts with the same underlying (symbol)). Only the net long or short position in each series is counted for margin purposes.

Net short call positions and net short futures positions are further reduced where underlying stocks have been deposited to cover the short positions. The number of contracts covered is determined by dividing the number of shares deposited by the contracts size (multiplier).

2.3 Variation Margin calculation

Variation margins are calculated for futures positions in the period comprised between the trading date and the expiration included.

Specifically, to calculate the variation margin, Futures positions are subject to daily marking-to-market through the payment / receipt of the differential between:

- the Daily Settlement Price of the current day and the trade price, for Open Positions

⁴The theoretical credits are not paid out to the adherent but can be used only for covering the Initial Margins.

arising from the trading activity of that same day;

- the Daily Settlement Price of the current day and the Daily Settlement Price of the preceding Open Market day, for Open Positions arising from previous days' activity.

2.4 Initial Margin calculation

2.4.1 Future straddle margin calculation

As mentioned before, these margins are computed to hedge market risk on Futures positions having opposite sign on different maturities and are equal to the number of Futures Spread positions multiplied for the Future Spread⁵ Margin fixed by CC&G. The latter is determined by estimating the greatest daily variation, reasonably possible, between the difference of Futures prices F_i and F_j (calendar spread) having different maturities occurred in a day, and the same difference (calendar spread) on the following day.

The calculation of futures spread margin for the net futures positions in the class group foresees the following steps:

- Calculate the total spread (both long and short) quantity for the class as the lesser of the total net long or total net short contract quantity for the class.

Example:

| Contract | Net Long | Net Short |
|---------------------------|----------|-----------|
| March future | — | 15 |
| June future | 14 | — |
| September future | 19 | — |
| December future | — | 13 |
| Total net position | 33 | 28 |

Total class spread long quantity = 28

Total class spread short quantity = 28

- Calculate the spot month spread contract quantity for the class.
 - If the spot month is a net long position, the spot month spread contract quantity equals to the lesser between net long position and class spread long quantity
 - If the spot month is a net short position, the spot month spread contract

⁵ The number of Futures Spread positions for each Class is equal to *Min* (Σ long positions; Σ short positions).

quantity equals to the lesser between net short position and class spread short quantity

Example:

| Contract | Net Long | Net Short |
|---------------------------|-----------|-----------|
| March future | — | 15 |
| June future | 14 | — |
| September future | 19 | — |
| December future | — | 13 |
| Total net position | 33 | 28 |

For the March (spot month) futures position:

| | |
|---|-----------|
| Net short position | 15 |
| Class spread short quantity | 28 |
| Class spread short > net short position | |
| Spot month spread quantity for the class | 15 |

C. Calculate non spot spread contract quantity for the class.

- a. Calculate the total spread contract quantity for the class by adding the class spread long contract quantity to the class spread short quantity.

$$\text{Total class spread quantity} = \text{Total spread long} + \text{total spread short}$$

- b. Calculate the total class non spot spread contract quantity by subtracting the spot month spread contract quantity from the total spread contract quantity for the class.

$$\text{Non spot spread contract quantity} = \text{Total spread quantity} - \text{spot month spread quantity}$$

Example:

| | |
|---------------------------------------|-------------|
| Total class spread long quantity | 28 |
| Total class spread short quantity | + 28 |
| Total class spread quantity | = 56 |
| Spot month spread contract quantity | - 15 |
| Total non spot spread quantity | = 41 |

D. Calculate total spread margin for the class, by adding the spot spread margin requirement and the non spot margin requirement for the class.

- a. The spot month spread margin requirement for the class is calculated by multiplying the spot spread rate times the spot month spread contract

quantity for the class (calculated in step B above);

- b. The non spot spread margin requirement for the class is calculated by multiplying the non spot spread rate times the non spot spread contract quantity for the class (calculated in step C above).

Example:

| | Qty | | Rate | Tot |
|--|-----|---|--------|-----------|
| Spot month spread margin requirement | 15 | * | 300,00 | 4.500,00 |
| Non spot spread margin requirement | 41 | * | 200,00 | 8.200,00 |
| Total class spread margin requirement | | = | | 12.700,00 |

2.4.2 Mark to Market margin calculation

Mark to Market margins for each class are composed by the following components:

- A. MTM Margin for unsettled stock futures contracts:** it is calculated by multiplying the net delivery position times the contract size times the difference between the current market price of the underlying and the "delivery price" of the expired position (Mark to Market amount).

$$\text{Mark to Market margin} = \text{MtM amount} * \text{Contract quantity} * \text{Multiplier}$$

where Mark to Market amount = Underlying price - Delivery price

Presuming it is positive, mark to market margin is a credit for the holder of long stock future position and a debit for the holder of short stock future position.

- B. MTM Margin for Securities:** it is calculated for each series of securities or rights issues subtracting the Current Market Value Amount (CMV) that is the theoretical countervalue of the positions from the Delivery Versus Payment Amount (DVP) that is the cash amount to be paid/collected in the settlement system.

$$\text{MTM amount} = \text{CMV amount} - \text{DVP amount}$$

The total class group MTM margin is calculated by summing the MTM margin credit and debits for each series in the class group.

It is worth mentioning that the theoretical gains arising from the Mark-To-Market Margins are never paid out to the Clearing Member; they can only be utilized within the Initial Margin calculation procedure to offset Initial Margin requirements deriving from other Integrated Portfolios.

2.4.3 Premium margin calculation

The next step consists in calculation of premium margin⁶ for all options in the class group.

Premium margin for each class group are composed by the following components:

- A. Premium margin for each ordinary position:** it is calculated for each series of options by multiplying the net long or short contract quantity by the contract size by the closing price of the options series.

$$\text{Premium margin} = \text{Closing price} * \text{Contract quantity} * \text{Multiplier}$$

- B. Premium margin for each exercised and assigned position⁷:** It is calculated by multiplying the net exercised or assigned contract quantity times the contract size times the difference between the strike price of the exercised position and the current market price of the underlying.

$$\text{Premium margin} = \text{In-the-money amount} * \text{Contract quantity} * \text{Multiplier}$$

where:

$$\text{In-the-money amount (calls)} = \text{Underlying Price} - \text{Strike price}$$

$$\text{In-the-money amount (puts)} = \text{Strike Price} - \text{Underlying Price}$$

Premium margin for both open positions and exercised and assigned positions is summed algebraically at the class group level to arrive at a total class group premium margin debit or credit.

2.4.4 Additional Margin Calculation

Additional Margin is the incremental cost of liquidating a portfolio in the event of a worst case change in the price of the underlying and is calculated for all options, futures, securities and rights issues in the same class group.

⁶ For these option positions, premium margin is a credit for the holder of the long position as it represents the proceeds from selling the long position if it were liquidated at the current market price. Premium margin is a debit or requirement for the holder of the short position as it represents the cost to buy back the short position if, likewise, it were to be liquidated at the current market price.

⁷ It represents a credit for the exercised long position (presuming it is In-The-Money) and a debit for the corresponding assigned short position.

As previously mentioned, the present methodology allows evaluation of unitary risk on a portfolio comprising both cash and derivatives positions.

MARS in fact determines Initial Margins for the Integrated Portfolio by algebraically summing the theoretical liquidation gains/loss of each position under the same hypothesis of underlying price variation within the Margin Interval.

In the case of portfolios also comprising options MARS not only take into consideration extreme price variations within the Margin Interval, but also considers eight intermediate price scenarios⁸. This is in order to properly evaluate the risk for those trading strategies whose maximum losses occur on underlying price values comprised between the extremes of the Margin Interval. The Ordinary Initial Margin is assumed equal to the largest liquidation cost calculated at each price scenario.

2.4.4.1 ADDITIONAL MARGIN CALCULATION FOR THE CLASS GROUP

Below the sub-steps of calculation are summarized:

Step 1. Calculate the total gain or loss for each position⁹ for each of the five downside values (D5, D4, D3, D2, D1) and for each of the five upside values (U1, U2, U3, U4, U5).

Step 2. Calculate the total Additional Margin for the class group by adding the additional margin amounts calculated for each position in the class group at their respective upside and downside points.

For example all Downside 5 additional margin amounts are added together, followed by all Downside 4 additional margin amounts and so on until there are 10 total additional margin amounts for the class group.

Total additional margin D5 = Sum (Position¹ additional margin^{D5} + Position² additional margin^{D5} + Positionⁿ additional margin^{D5})

⁸ Intermediate scenarios are defined as a percentage of Margin Interval (20%, 40%, 60%, 80%)

⁹ Options evaluation in the different price scenarios is effected using a binomial price model (Cox-Ross-Rubinstein) for American options and the Black and Scholes model for European options. Furthermore, for a conservative evaluation of short position in deep Out-of-The-Money options (both calls and puts) – whose value is near to zero and have low sensitivity to underlying price variations – CC&G set a minimum theoretical liquidation cost (Short Option Adjustment). For rights issues having as underlying equity shares, the pricing models described for equity options are employed to calculate the theoretical values for each price scenario.

Example:

| | D5 | D4 | D3 | D2 | D1 | U1 | U2 | U3 | U4 | U5 |
|-------------------|-------------|-------------|-------------|-------------|------------|-------------|--------------|--------------|--------------|--------------|
| Position1: | -2000 | -800 | -600 | -400 | -200 | 200 | 400 | 600 | 800 | 1000 |
| Position2: | -1000 | -700 | -600 | -500 | -400 | 100 | 200 | 300 | 400 | 500 |
| Position3: | 5000 | 4000 | 3000 | 2000 | 1000 | -1000 | -2000 | -3000 | -4000 | -5000 |
| Totals: | 2000 | 2500 | 1800 | 1100 | 400 | -700 | -1400 | -2100 | -2800 | -3500 |

A negative margin total is a margin credit and a positive margin total is a margin requirement.

Step 3. If the class group is not part of a larger product group, the additional margin requirement for the class group is the *largest debit* of the ten values above or zero in the unlikely event that there are no debits.

2.4.4.2 ADDITIONAL MARGIN CALCULATION FOR THE PRODUCT GROUP

If the class group is part of a larger product group, MARS methodology foresees these further calculation sub-steps:

Step 1. Any additional margin amounts for the class group which are credits (negative) is multiplied by the product group offset¹⁰ to arrive at an array of ten class group additional margin values.

Example:

| | D5 | D4 | D3 | D2 | D1 | U1 | U2 | U3 | U4 | U5 |
|---------------------------|------|------|------|------|-----|------|-------|-------|-------|-------|
| Class | 2000 | 2500 | 1800 | 1100 | 400 | -700 | -1400 | -2100 | -2800 | -3500 |
| Offset factor: 85% | | | | | | | | | | |
| Total | 2000 | 2500 | 1800 | 1100 | 400 | -595 | -1190 | -1785 | -2380 | -2975 |

Step 2. Calculate the total upside and downside additional margin for the product group by summing up the additional margin requirements for each class group in the product group at their respective upside and downside points.

¹⁰ The product group offset represents the percentage of margin credits calculated at the class group level which will be allowed to offset margin requirements for other class groups in the product group. The offset is based on the historical price correlation between the various class groups which comprise a product group

Example:

| | D5 | D4 | D3 | D2 | D1 | U1 | U2 | U3 | U4 | U5 |
|-------|-------|-------------|------|------|------|------|-------|-------|-------|-------|
| CG1 | 2000 | 2500 | 1800 | 1100 | 400 | -595 | -1190 | -1785 | -2380 | -2975 |
| CG2 | -1000 | -800 | -600 | -400 | -200 | 200 | 400 | 600 | 800 | 1000 |
| CG3 | -100 | -80 | -60 | -40 | -20 | 20 | 60 | 100 | 150 | 210 |
| Total | 900 | 1620 | 1140 | 660 | 180 | -375 | -730 | -1085 | -1430 | -1765 |

Step 3. The total additional margin requirement for the product group is the largest debit from the array of upside and downside product group additional margin values. In the unlikely event that all of the values in the array are credits, the product group additional margin is equal to zero.

$$\text{Product Group Additional Margin} = 1620$$

Step 4. Compare the minimum margin calculated for the product group to the additional margin requirement calculated for the product group. If the minimum margin is greater than the additional margin requirement, then the minimum margin for the product group (see next paragraph 2.4.4.3) becomes the additional margin requirement for the product group.

2.4.4.3 MINIMUM MARGIN CALCULATION FOR THE PRODUCT GROUP

Step 1. Calculation of the Minimum Margin for the class group

A. Calculate the net long or short contract quantity (as the absolute value) for all calls, puts, futures, securities and rights issues in the class group.

B. Calculate the options minimum margin in the class group as follows:

$$\begin{aligned} & \text{Net long or short contract quantity for calls} \quad * \quad \text{options minimum margin rate} + \\ & \text{Net long or short contract quantity for puts} \quad * \quad \text{options minimum margin rate} \\ & = \text{Class group options minimum margin} \end{aligned}$$

C. Calculate the securities minimum margin in the class group as follows.

$$\begin{aligned} & \text{Net long or short contract quantity for equity} \quad * \quad \text{Equity minimum margin rate} + \\ & \text{Net long or short contract quantity for warrant} \quad * \quad \text{Warrant minimum margin rate} + \\ & \text{Net long or short contract quantity for rights issues} \quad * \quad \text{Rights Issues minimum margin rate} \\ & = \text{Class group securities minimum margin} \end{aligned}$$

D. Calculate the futures minimum margin in the class group as follows:

$$\begin{aligned} & \text{Net long or short contract quantity for futures} \quad * \quad \text{Equity minimum margin rate} \\ & \text{Net long or short contract quantity for warrant} \quad * \quad \text{Warrant minimum margin rate} \\ & = \text{Class group futures minimum margin} \end{aligned}$$

E. Calculate the minimum margin *for the class group* by summing up the class group minimum margin calculated for options, futures and securities.

Step 2. Calculation of the Minimum Margin for the product group

Calculate the minimum margin requirement for the product group by summing up the minimum margin calculated for each class group in the product group.

2.5 Calculation of Initial Margin for the product group

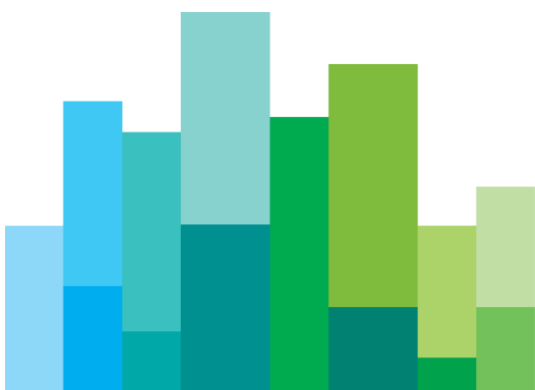
The total Initial margin requirement or credit for the product group is calculated by summing algebraically the total of the product group spread margin, the product group MTM margin, the product group premium margin and the total additional margin (or minimum margin) for the product group.

2.6 Margins on Fail positions

Margins on fail positions are calculated using the same procedure used for ordinary positions. However, fail positions and ordinary positions are maintained segregated for all margining purposes. Therefore margins on fail positions are calculated separately and summed, only if at debit, to the total margin requirement for ordinary positions.

Segregation between ordinary positions and fail position is total. Under no circumstances margin credits on fail (ordinary) positions may compensate debits on ordinary (fail) positions.

3. ATTACHMENTS



ATTACHMENT 1

500 Long Position shares XYZ - 300 Short Positions shares XYZ
2 Short Option Positions XYZ Call June YY

| Shares | Mark-to-Market Margin | |
|--------|---|------------------------|
| | (Reference Price - Trade Price) x No. of Shares | |
| | (40 - 40,18) x 500 | -90,00 € Debit |
| | (40 - 39,8) x -300 | -60,00 € Debit |
| | TOTAL | -150,00 € Debit |

| Options | Premium Margins | |
|--------------|--|-----------------|
| | (Closing Price x No. of Lots x No. of Underlying Shares) | |
| | 2,654 x -2 x 100 | -530,80 € Debit |
| TOTAL | -530,80 € Debit | |

| | | DOWNSIDE | | | | | Current Market Value | UPSIDE | | | | |
|--|--|----------|---------|---------|---------|---------|----------------------|---------|---------|---------|---------|---------|
| | | -10,00% | -8,00% | -6,00% | -4,00% | -2,00% | | 2,00% | 4,00% | 6,00% | 8,00% | 10,00% |
| Margin Interval | | | | | | | | | | | | |
| Theoretical Value | | 36,000 | 36,800 | 37,600 | 38,400 | 39,200 | 40,000 | 40,800 | 41,600 | 42,400 | 43,200 | 44,000 |
| Shares | Reference Price | 40,000 | 40,000 | 40,000 | 40,000 | 40,000 | | 40,000 | 40,000 | 40,000 | 40,000 | 40,000 |
| | Theoretical Liquidation Gain/Loss per Share (€) | -4,000 | -3,200 | -2,400 | -1,600 | -800 | | 0,800 | 1,600 | 2,400 | 3,200 | 4,000 |
| | No. of Shares | 200 | 200 | 200 | 200 | 200 | | 200 | 200 | 200 | 200 | 200 |
| | Total Theoretical Liquidation Gain/Loss (€) for Shares | -800,00 | -640,00 | -480,00 | -320,00 | -160,00 | | 160,00 | 320,00 | 480,00 | 640,00 | 800,00 |
| Options | Theoretical Value of Option Call 39 Jun YY | 0,771 | 1,038 | 1,359 | 1,736 | 2,168 | 2,654 | 3,189 | 3,771 | 4,393 | 5,050 | 5,737 |
| | Closing Price | 2,654 | 2,654 | 2,654 | 2,654 | 2,654 | | 2,654 | 2,654 | 2,654 | 2,654 | 2,654 |
| | Theoretical Liquidation Gain/Loss (€) | -1,883 | -1,616 | -1,295 | -918 | -486 | | 0,535 | 1,117 | 1,739 | 2,396 | 3,083 |
| | X -2 Short Positions | 3,766 | 3,232 | 2,590 | 1,836 | 972 | | -1,070 | -2,234 | -3,478 | -4,792 | -6,166 |
| | Total Theoretical Liquidation Gain/Loss (€) Call 39 Jun YY | 376,60 | 323,20 | 259,00 | 183,60 | 97,20 | | -107,00 | -223,40 | -347,80 | -479,20 | -616,60 |
| Integrated Portfolio | Total Theoretical Liquidation Gain/Loss (€) for Shares and Derivatives | -423,40 | -316,80 | -221,00 | -136,40 | -62,80 | | 53,00 | 96,60 | 132,20 | 160,80 | 183,40 |
| | Largest Theoretical Loss | -423,40 | | | | | | | | | | |
| | Ordinary Margins | -423,40 | | | | | | | | | | |
| | Mark-To-Market Margins for Shares | -150,00 | | | | | | | | | | |
| | Premium Margins Opzioni | -530,80 | | | | | | | | | | |
| Total Initial Margins for the Class Group | -1.104,20 € Debit | | | | | | | | | | | |

Ordinary Margin applied to the sole share position without cross-margining

Ordinary Margin applied to the sole option position without cross-margining

Ordinary Margin applied to the Overall Position (Cross Margining)

ATTACHMENT 2

500 Long Position shares XYZ - 300 Short Positions shares XYZ

2 PUT Long Option Positions XYZ June YY - 2 CALL Long Option Positions XYZ June YY

| Shares | Mark-To-Market Margin | |
|--------------------|---|----------------|
| | (Reference Price - Trade Price) x No. of Shares | |
| (40 - 40,18) x 500 | -90,00 | € Debit |
| (40 - 39,8) x -300 | -60,00 | € Debit |
| TOTAL | -150,00 | € Debit |

| Options | Premium Margins | |
|-----------------|--|-----------------|
| | (Closing Price x No. of Lots x No. of Underlying Shares) | |
| 0,946 x 2 x 100 | 189,20 | € Credit |
| 3,511 x 2 x 100 | 702,20 | € Credit |
| TOTAL | 891,40 | € Credit |

| | | DOWNSIDE | | | | | Current Market Value | UPSIDE | | | | |
|--|--|----------|----------|---|---------|---------|----------------------|---------|---------|---------|---------|---------|
| | | -10,00% | -8,00% | -6,00% | -4,00% | -2,00% | | 2,00% | 4,00% | 6,00% | 8,00% | 10,00% |
| Shares | Margin Interval | -10,00% | -8,00% | -6,00% | -4,00% | -2,00% | | 2,00% | 4,00% | 6,00% | 8,00% | 10,00% |
| | Theoretical Value | 36,000 | 36,800 | 37,600 | 38,400 | 39,200 | 40,000 | 40,800 | 41,600 | 42,400 | 43,200 | 44,000 |
| | Reference Price | 40,000 | 40,000 | 40,000 | 40,000 | 40,000 | | 40,000 | 40,000 | 40,000 | 40,000 | 40,000 |
| | Theoretical Liquidation Gain/Loss per Share (€) | -4,000 | -3,200 | -2,400 | -1,600 | -0,800 | | 0,800 | 1,600 | 2,400 | 3,200 | 4,000 |
| | No. of Shares | 200 | 200 | 200 | 200 | 200 | | 200 | 200 | 200 | 200 | 200 |
| Total Theoretical Liquidation Gain/Loss (€) for Shares | | -800,00 | -640,00 | -480,00 | -320,00 | -160,00 | | 160,00 | 320,00 | 480,00 | 640,00 | 800,00 |
| Options | Theoretical Value of Option Call 43 Jun YY | 0,171 | 0,256 | 0,371 | 0,521 | 0,711 | 0,946 | 1,229 | 1,561 | 1,945 | 2,379 | 2,861 |
| | Closing Price | 0,9460 | 0,9460 | 0,9460 | 0,9460 | 0,9460 | | 0,9460 | 0,9460 | 0,9460 | 0,9460 | 0,9460 |
| | Theoretical Liquidation Gain/Loss (€) | -0,7750 | -0,6900 | -0,5750 | -0,4250 | -0,2350 | | 0,2830 | 0,6150 | 0,9990 | 1,4330 | 1,9150 |
| | X 2 Long Positions | -1,5500 | -1,3800 | -1,1500 | -0,8500 | -0,4700 | | 0,5660 | 1,2300 | 1,9980 | 2,8660 | 3,8300 |
| | Total Theoretical Liquidation Gain/Loss (€) Call 43 Jun YY | -155,00 | -138,00 | -115,00 | -85,00 | -47,00 | | 56,60 | 123,00 | 199,80 | 286,60 | 383,00 |
| | Theoretical Value of Option Put 43 Jun YY | 6,7370 | 6,0220 | 5,3360 | 4,6860 | 4,0760 | 3,5110 | 2,9940 | 2,5270 | 2,1100 | 1,7440 | 1,4260 |
| | Closing Price | 3,5110 | 3,5110 | 3,5110 | 3,5110 | 3,5110 | | 3,5110 | 3,5110 | 3,5110 | 3,5110 | 3,5110 |
| | Theoretical Liquidation Gain/Loss (€) | 3,2260 | 2,5110 | 1,8250 | 1,1750 | 0,5650 | | -0,5170 | -0,9840 | -1,4010 | -1,7670 | -2,0850 |
| X 2 Long Positions | 6,4520 | 5,0220 | 3,6500 | 2,3500 | 1,1300 | | -1,0340 | -1,9680 | -2,8020 | -3,5340 | -4,1700 | |
| Total Theoretical Liquidation Gain/Loss (€) Put 43 Jun YY | 645,20 | 502,20 | 365,00 | 235,00 | 113,00 | | -103,40 | -196,80 | -280,20 | -353,40 | -417,00 | |
| Total Theoretical Liquidation Gain/Loss (€) for Options | 490,20 | 364,20 | 250,00 | 150,00 | 66,00 | | -46,80 | -73,80 | -80,40 | -66,80 | -34,00 | |
| Total Theoretical Liquidation Gain/Loss (€) for Cash and Derivatives | | -309,80 | -275,80 | -230,00 | -170,00 | -94,00 | | 113,20 | 246,20 | 399,60 | 573,20 | 766,00 |
| Integrated Portfolio | Largest Theoretical Loss | -309,80 | € Debit | | | | | | | | | |
| | Ordinary Margins | -309,80 | € Debit | Ordinary Margin applied to the sole share position without cross-margining | | | | | | | | |
| | Mark-To-Market Margins for Shares | -150,00 | € Debit | | | | | | | | | |
| | Premium Margins for Options | 891,40 | € Credit | Ordinary Margin applied to the sole option position without cross-margining | | | | | | | | |
| | Total Initial Margins for the Class Group | 0,00 | | | | | | | | | | |
| | Outstanding Theoretical Credit | 431,60 | € Credit | Ordinary Margin applied to the Overall Position (Cross Margining) | | | | | | | | |

ATTACHMENT 3

TWO LONGPOSITIONS INDEX ABC MARCH 20YY

| | DOWNSIDE | | | | | | UPSIDE | | | | | |
|--|----------|---------|---------|---------|--------|--------|--------|--------|--------|--------|--------|--|
| Margin Interval | -7,50% | -6,00% | -4,50% | -3,00% | -1,50% | | 1,50% | 3,00% | 4,50% | 6,00% | 7,50% | |
| Futures Theoretical Value | 40.700 | 41.360 | 42.020 | 42.680 | 43.340 | 44.000 | 44.660 | 45.320 | 45.980 | 46.640 | 47.300 | |
| Closing Price | 44.000 | 44.000 | 44.000 | 44.000 | 44.000 | | 44.000 | 44.000 | 44.000 | 44.000 | 44.000 | |
| Theoretical Liquidation Gain/Loss (Index Points) | -3.300 | -2.640 | -1.980 | -1.320 | -660 | | 660 | 1.320 | 1.980 | 2.640 | 3.300 | |
| X 2 Long Positions | -6.600 | -5.280 | -3.960 | -2.640 | -1.320 | | 1.320 | 2.640 | 3.960 | 5.280 | 6.600 | |
| Theoretical Liquidation Total Gains/Losses (€) | -33.000 | -26.400 | -19.800 | -13.200 | -6.600 | | 6.600 | 13.200 | 19.800 | 26.400 | 33.000 | |
| Largest Theoretical Loss | -33.000 | € | | | | | | | | | | |
| Ordinary Initial Margins | -33.000 | € Debit | | | | | | | | | | |
| Class Group Total Initial Margins | -33.000 | € Debit | | | | | | | | | | |

ATTACHMENT 4

TEN SHORT OPTION POSITIONS ABC CALL 4,10 MAR 20YY

| Premium Margins | | |
|--|---|---------------|
| (Closing Price x Number of Lots x No. Underlying Shares) | | |
| 0,17 x 10 x 1.000 | - | 1.700 € Debit |
| TOTAL | - | 1.700 € Debit |

| Margin Interval | DOWNSIDE | | | | | | UPSIDE | | | | |
|--|-------------------|----------|--------|--------|--------|------|---------|---------|-----------|-----------|-----------|
| | -10,00% | -8,00% | -6,00% | -4,00% | -2,00% | | 2,00% | 4,00% | 6,00% | 8,00% | 10,00% |
| ABC Theoretical Value (€) | 3,60 | 3,68 | 3,76 | 3,84 | 3,92 | 4,00 | 4,08 | 4,16 | 4,24 | 4,32 | 4,40 |
| ABC Call 4,10 MAR YY Option Theoretical Value | 0,040 | 0,059 | 0,079 | 0,103 | 0,133 | 0,17 | 0,206 | 0,250 | 0,299 | 0,352 | 0,409 |
| Closing Price | 0,170 | 0,170 | 0,170 | 0,170 | 0,170 | | 0,170 | 0,170 | 0,170 | 0,170 | 0,170 |
| Theoretical Liquidation Gain/Loss (€) | -0,130 | -0,111 | -0,091 | -0,067 | -0,037 | | 0,04 | 0,08 | 0,13 | 0,18 | 0,24 |
| X 10 Short Positions | 1,30 | 1,11 | 0,91 | 0,67 | 0,37 | | -0,36 | -0,80 | -1,29 | -1,82 | -2,39 |
| Theoretical Liquidation Total Gains/Losses (€) | 1.300,00 | 1.110,00 | 910,00 | 670,00 | 370,00 | | -360,00 | -800,00 | -1.290,00 | -1.820,00 | -2.390,00 |
| Largest Theoretical Loss | -2.390,00 € | | | | | | | | | | |
| Ordinary Initial Margins | -2.390,00 € Debit | | | | | | | | | | |
| Premium Margins | -1.700,00 € Debit | | | | | | | | | | |
| Class Total Initial Margins | -4.090,00 € Debit | | | | | | | | | | |

ATTACHMENT 5

10 LONG STRADDLE ABC 4,10 MAR YY: { TEN LONG OPTION POSITIONS ABC CALL 4,10 MAR 20YY
TEN LONG OPTION POSITIONS ABC PUT 4,10 MAR 20YY

| Premium Margins | | |
|--|-------|----------|
| (Closing Price x Number of Lots x No. Underlying Shares) | | |
| 0,17 x 10 x 1.000 | 1.700 | € Credit |
| 0,25 x 10 x 1.000 | 2.500 | € Credit |
| TOTAL | 4.200 | € Credit |

| | DOWNSIDE | | | | | | UPSIDE | | | | | |
|---|------------------|-----------------|----------|----------|---------|------|---------------|---------|-----------|-----------|------------------|--|
| Margin Interval | -10,00% | -8,00% | -6,00% | -4,00% | -2,00% | | 2,00% | 4,00% | 6,00% | 8,00% | 10,00% | |
| ABC Theoretical Value (€) | 3,60 | 3,68 | 3,76 | 3,84 | 3,92 | 4,00 | 4,08 | 4,16 | 4,24 | 4,32 | 4,40 | |
| ABC Call 4,10 MAR YY Option Theoretical Value | 0,040 | 0,059 | 0,079 | 0,103 | 0,133 | 0,17 | 0,206 | 0,250 | 0,299 | 0,352 | 0,409 | |
| Closing Price | 0,170 | 0,170 | 0,170 | 0,170 | 0,170 | | 0,170 | 0,170 | 0,170 | 0,170 | 0,170 | |
| Theoretical Liquidation Gains/Losses (€) | -0,130 | -0,111 | -0,091 | -0,067 | -0,037 | | 0,04 | 0,08 | 0,13 | 0,18 | 0,24 | |
| X 10 Long Positions | -1,30 | -1,11 | -0,91 | -0,67 | -0,37 | | 0,36 | 0,80 | 1,29 | 1,82 | 2,39 | |
| Theoretical Liquidation Total Gains/Losses (€) | <u>-1.300,00</u> | -1.110,00 | -910,00 | -670,00 | -370,00 | | 360,00 | 800,00 | 1.290,00 | 1.820,00 | 2.390,00 | |
| ABC Put 4,10 MAR YY Option Theoretical Value | 0,500 | 0,47 | 0,406 | 0,351 | 0,300 | 0,25 | 0,211 | 0,177 | 0,146 | 0,119 | 0,100 | |
| Closing Price | 0,250 | 0,250 | 0,250 | 0,250 | 0,250 | | 0,250 | 0,250 | 0,250 | 0,250 | 0,250 | |
| Theoretical Liquidation Gains/Losses (€) | 0,250 | 0,216 | 0,156 | 0,101 | 0,050 | | -0,04 | -0,07 | -0,10 | -0,13 | -0,15 | |
| X 10 Long Positions | 2,50 | 2,16 | 1,56 | 1,01 | 0,50 | | -0,39 | -0,73 | -1,04 | -1,31 | -1,50 | |
| Theoretical Liquidation Total Gains/Losses (€) | 2.500,00 | 2.160,00 | 1.560,00 | 1.010,00 | 500,00 | | -390,00 | -730,00 | -1.040,00 | -1.310,00 | <u>-1.500,00</u> | |
| Theoretical Liquidation Gains/Losses Totali (€) | 1.200,00 | 1.050,00 | 650,00 | 340,00 | 130,00 | | <u>-30,00</u> | 70,00 | 250,00 | 510,00 | 890,00 | |
| Largest Theoretical Loss | -30,00 | € | | | | | | | | | | |
| Ordinary Initial Margins | -30,00 | € Debit | | | | | | | | | | |
| Premium Margins | 4.200,00 | € Credit | | | | | | | | | | |
| Class Total Initial Margins | 4.170,00 | € Credit | | | | | | | | | | |

ATTACHMENT 6

TWO LONG POSITIONS INDEX ABC MARCH 20YY (PRODUCT GROUP: ZZZ) FOUR SHORT POSITIONS XYZ FUTURES MARCH 20YY (PRODUCT GROUP: ZZZ)

| | DOWNSIDE | | | | | | UPSIDE | | | | |
|---|----------------|---------|---------|---------|--------|--------|--------|--------|--------|--------|--------|
| Margin Interval | -7,50% | -6,00% | -4,50% | -3,00% | -1,50% | | 1,50% | 3,00% | 4,50% | 6,00% | 7,50% |
| ABC Theoretical Value | 40.700 | 41.360 | 42.020 | 42.680 | 43.340 | 44.000 | 44.660 | 45.320 | 45.980 | 46.640 | 47.300 |
| Closing Price | 44.000 | 44.000 | 44.000 | 44.000 | 44.000 | | 44.000 | 44.000 | 44.000 | 44.000 | 44.000 |
| Theoretical Liquidation Gains/Losses (Index Points) | -3.300 | -2.640 | -1.980 | -1.320 | -660 | | 660 | 1.320 | 1.980 | 2.640 | 3.300 |
| X 2 Long Positions | -6.600 | -5.280 | -3.960 | -2.640 | -1.320 | | 1.320 | 2.640 | 3.960 | 5.280 | 6.600 |
| Theoretical Liquidation Total Gains/Losses (€) | <u>-33.000</u> | -26.400 | -19.800 | -13.200 | -6.600 | | 6.600 | 13.200 | 19.800 | 26.400 | 33.000 |
| (60% Credit Reduction) | <u>-33.000</u> | -26.400 | -19.800 | -13.200 | -6.600 | | 3.960 | 7.920 | 11.880 | 15.840 | 19.800 |

| | DOWNSIDE | | | | | | UPSIDE | | | | |
|---|----------|--------|--------|--------|--------|--------|--------|--------|---------|---------|----------------|
| Margin Interval | -6,50% | -5,20% | -3,90% | -2,60% | -1,30% | | 1,30% | 2,60% | 3,90% | 5,20% | 6,50% |
| XYZ Theoretical Value | 31.323 | 31.758 | 32.194 | 32.629 | 33.065 | 33.500 | 33.936 | 34.371 | 34.807 | 35.242 | 35.678 |
| Closing Price | 33.500 | 33.500 | 33.500 | 33.500 | 33.500 | | 33.500 | 33.500 | 33.500 | 33.500 | 33.500 |
| Theoretical Liquidation Gains/Losses (Index Points) | -2.178 | -1.742 | -1.307 | -871 | -436 | | 436 | 871 | 1.307 | 1.742 | 2.178 |
| X 4 Short Positions | 8.710 | 6.968 | 5.226 | 3.484 | 1.742 | | -1.742 | -3.484 | -5.226 | -6.968 | -8.710 |
| Theoretical Liquidation Total Gains/Losses (€) | 22.211 | 17.768 | 13.326 | 8.884 | 4.442 | | -4.442 | -8.884 | -13.326 | -17.768 | <u>-22.211</u> |
| (60% Credit Reduction) | 13.326 | 10.661 | 7.996 | 5.331 | 2.665 | | -4.442 | -8.884 | -13.326 | -17.768 | <u>-22.211</u> |

| | DOWNSIDE | | | | | | UPSIDE | | | | |
|--|----------------|---------|---------|---------|--------|--|--------|--------|---------|---------|----------------|
| Theoretical Liquidation Total Gains/Losses (€) ABC | <u>-33.000</u> | -26.400 | -19.800 | -13.200 | -6.600 | | 6.600 | 13.200 | 19.800 | 26.400 | 33.000 |
| (60% Credit Reduction) | <u>-33.000</u> | -26.400 | -19.800 | -13.200 | -6.600 | | 3.960 | 7.920 | 11.880 | 15.840 | 19.800 |
| Theoretical Liquidation Total Gains/Losses (€) XYZ Futures | 22.211 | 17.768 | 13.326 | 8.884 | 4.442 | | -4.442 | -8.884 | -13.326 | -17.768 | <u>-22.211</u> |
| (60% Credit Reduction) | 13.326 | 10.661 | 7.996 | 5.331 | 2.665 | | -4.442 | -8.884 | -13.326 | -17.768 | <u>-22.211</u> |
| Theoretical Liquidation Total Gains/Losses (€) AAA Product Group | <u>-19.674</u> | -15.739 | -11.804 | -7.869 | -3.935 | | -482 | -964 | -1.446 | -1.928 | -2.411 |
| Largest Theoretical Loss | -19.674 | € | | | | | | | | | |
| Ordinary Initial Margins | -19.674 | € Debit | | | | | | | | | |
| Product Group Total Initial Margins | -19.674 | € Debit | | | | | | | | | |

ATTACHMENT 7

TWO SHORT POSITIONS FUTURE INDEX ABC MAR YY

TWO "SYNTHETIC" LONG POS. FUTURE INDEX ABC MAR YY {

FOUR LONG POSITIONS CALL 44.000 ABC MAR YY

FOUR SHORT POSITIONS PUT 44.000 ABC MAR YY

| Premium Margins | | |
|--|---------|----------|
| (Closing Price x Number of Lots x Index Point Value) | | |
| 2273 x 4 x 2,5 | 22.730 | € Credit |
| 2236 x -4 x 2,5 | -22.360 | € Debit |
| TOTAL | 370 | € Credit |

| Margin Interval | DOWNSIDE | | | | | | UPSIDE | | | | |
|---|--------------|---------|---------|--------|--------|--------|--------|---------|---------|---------|---------|
| | -7,50% | -6,00% | -4,50% | -3,00% | -1,50% | | 1,50% | 3,00% | 4,50% | 6,00% | 7,50% |
| ABC Theoretical Value | 40.700 | 41.360 | 42.020 | 42.680 | 43.340 | 44.000 | 44.660 | 45.320 | 45.980 | 46.640 | 47.300 |
| Closing Price | 44.000 | 44.000 | 44.000 | 44.000 | 44.000 | | 44.000 | 44.000 | 44.000 | 44.000 | 44.000 |
| Theoretical Liquidation Gains/Losses (Index Points) | -3.300 | -2.640 | -1.980 | -1.320 | -660 | | 660 | 1.320 | 1.980 | 2.640 | 3.300 |
| X 2 Short Positions | 6.600 | 5.280 | 3.960 | 2.640 | 1.320 | | -1.320 | -2.640 | -3.960 | -5.280 | -6.600 |
| Theoretical Liquidation Total Gains/Losses (€) | 33.000 | 26.400 | 19.800 | 13.200 | 6.600 | | -6.600 | -13.200 | -19.800 | -26.400 | -33.000 |
| ABC Futures Theoretical Value | 40.600 | 41.260 | 41.920 | 42.580 | 43.240 | 43.900 | 44.560 | 45.220 | 45.880 | 46.540 | 47.200 |
| ABC Variation | -3.300 | -2.640 | -1.980 | -1.320 | -660 | | 660 | 1.320 | 1.980 | 2.640 | 3.300 |
| Call 44.000 MAR YY Option Theoretical Value | 916 | 1.127 | 1.367 | 1.638 | 1.940 | 2.273 | 2.637 | 3.030 | 3.452 | 3.901 | 4.376 |
| Closing Price | 2.273 | 2.273 | 2.273 | 2.273 | 2.273 | | 2.273 | 2.273 | 2.273 | 2.273 | 2.273 |
| Theoretical Liquidation Gains/Losses (Index Points) | -1.357 | -1.146 | -906 | -635 | -333 | | 364 | 757 | 1.179 | 1.628 | 2.103 |
| X 4 Long Positions | -5.426 | -4.586 | -3.625 | -2.542 | -1.333 | | 1.455 | 3.030 | 4.718 | 6.514 | 8.411 |
| Theoretical Liquidation Gains/Losses (€) | -13.565 | -11.464 | -9.063 | -6.354 | -3.333 | | 3.638 | 7.574 | 11.794 | 16.284 | 21.027 |
| Put 44.000 MAR YY Option Theoretical Value | 4.179 | 3.730 | 3.310 | 2.921 | 2.563 | 2.236 | 1.940 | 1.673 | 1.435 | 1.224 | 1.039 |
| Closing Price | 2.236 | 2.236 | 2.236 | 2.236 | 2.236 | | 2.236 | 2.236 | 2.236 | 2.236 | 2.236 |
| Theoretical Liquidation Gains/Losses (Index Points) | 1.943 | 1.494 | 1.074 | 685 | 327 | | -296 | -563 | -801 | -1.012 | -1.197 |
| X -4 Short Positions | -7.774 | -5.974 | -4.295 | -2.738 | -1.307 | | 1.185 | 2.250 | 3.202 | 4.046 | 4.789 |
| Theoretical Liquidation Gains/Losses (€) | -19.435 | -14.936 | -10.737 | -6.846 | -3.267 | | 2.962 | 5.626 | 8.006 | 10.116 | 11.973 |
| Theoretical Liquidation Total Gains/Losses (€) | 0,00 | 0,00 | 0,00 | 0,00 | 0,00 | | 0,00 | 0,00 | 0,00 | 0,00 | 0,00 |
| Largest Theoretical Loss | 0 € | | | | | | | | | | |
| Minimum Margins | -780 € Debit | | | | | | | | | | |
| Ordinary Initial Margins | -780 € Debit | | | | | | | | | | |
| Premium Margins | 370 € Credit | | | | | | | | | | |
| Class Group Total Initial Margins | -410 € Debit | | | | | | | | | | |

ATTACHMENT 8

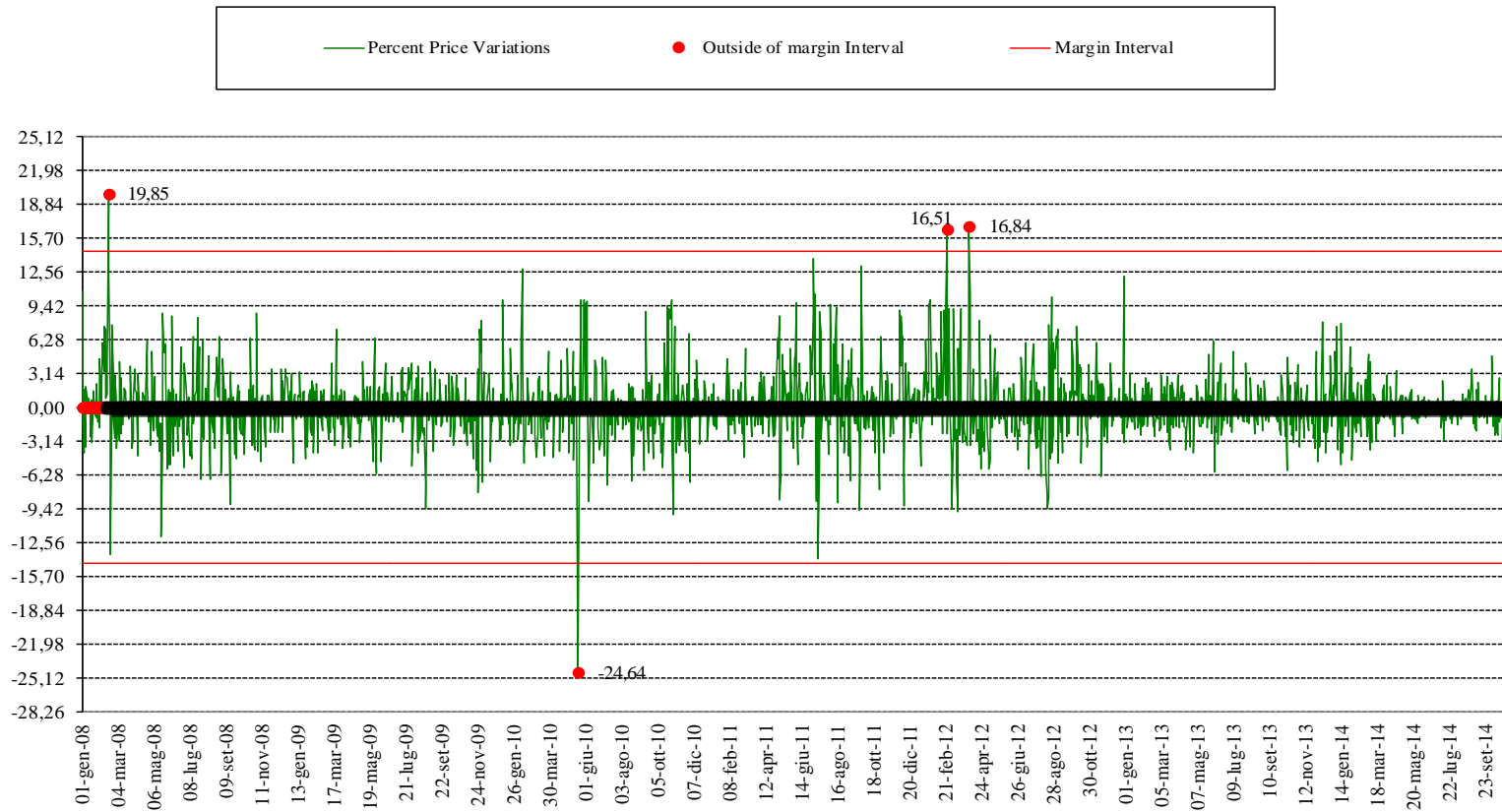
TWO ASSIGNED XYZ OPTIONS CALL 29,00 MAR YY

| Premium Margins | | |
|---|--------|---------|
| (In-The-Money Amount x No. Of Lots x No. Underlying Shares) | | |
| (30-29) x -2 x 500 | -1.000 | € Debit |
| TOTAL | -1.000 | € Debit |

| | DOWNSIDE | | | | | Reference Price | UPSIDE | | | | | |
|--|---------------|----------------|--------|--------|--------|-----------------|--------|-------|--------|--------|--------|--|
| Margin Interval | -7,50% | -6,00% | -4,50% | -3,00% | -1,50% | 30,00 | 1,50% | 3,00% | 4,50% | 6,00% | 7,50% | |
| XYZ Theoretical Value (€) | 27,75 | 28,20 | 28,65 | 29,10 | 29,55 | | 30,45 | 30,90 | 31,35 | 31,80 | 32,25 | |
| Strike Price XYZ Call 29,00 MAR YY | 29,00 | 29,00 | 29,00 | 29,00 | 29,00 | | 29,00 | 29,00 | 29,00 | 29,00 | 29,00 | |
| "Exercised Option Theoretical Value" ("Theoretical <i>In-The-Money Amount</i> ") | -1,25 | -0,80 | -0,35 | 0,10 | 0,55 | | 1,45 | 1,90 | 2,35 | 2,80 | 3,25 | |
| <i>In-The Money Amount</i> | 1,00 | 1,00 | 1,00 | 1,00 | 1,00 | | 1,00 | 1,00 | 1,00 | 1,00 | 1,00 | |
| Theoretical Liquidation Gains/Losses (€) | -2,25 | -1,80 | -1,35 | -0,90 | -0,45 | | 0,45 | 0,90 | 1,35 | 1,80 | 2,25 | |
| X 2 Assigned Positions | 4,50 | 3,60 | 2,70 | 1,80 | 0,90 | | -0,90 | -1,80 | -2,70 | -3,60 | -4,50 | |
| Theoretical Liquidation Total Gains/Losses (€) | 2.250 | 1.800 | 1.350 | 900 | 450 | | -450 | -900 | -1.350 | -1.800 | -2.250 | |
| Largest Theoretical Loss | -2.250 | € | | | | | | | | | | |
| Ordinary Initial Margins | -2.250 | € Debit | | | | | | | | | | |
| Premium Margins | -1.000 | € Debit | | | | | | | | | | |
| Class Total Initial Margins | -3.250 | € Debit | | | | | | | | | | |

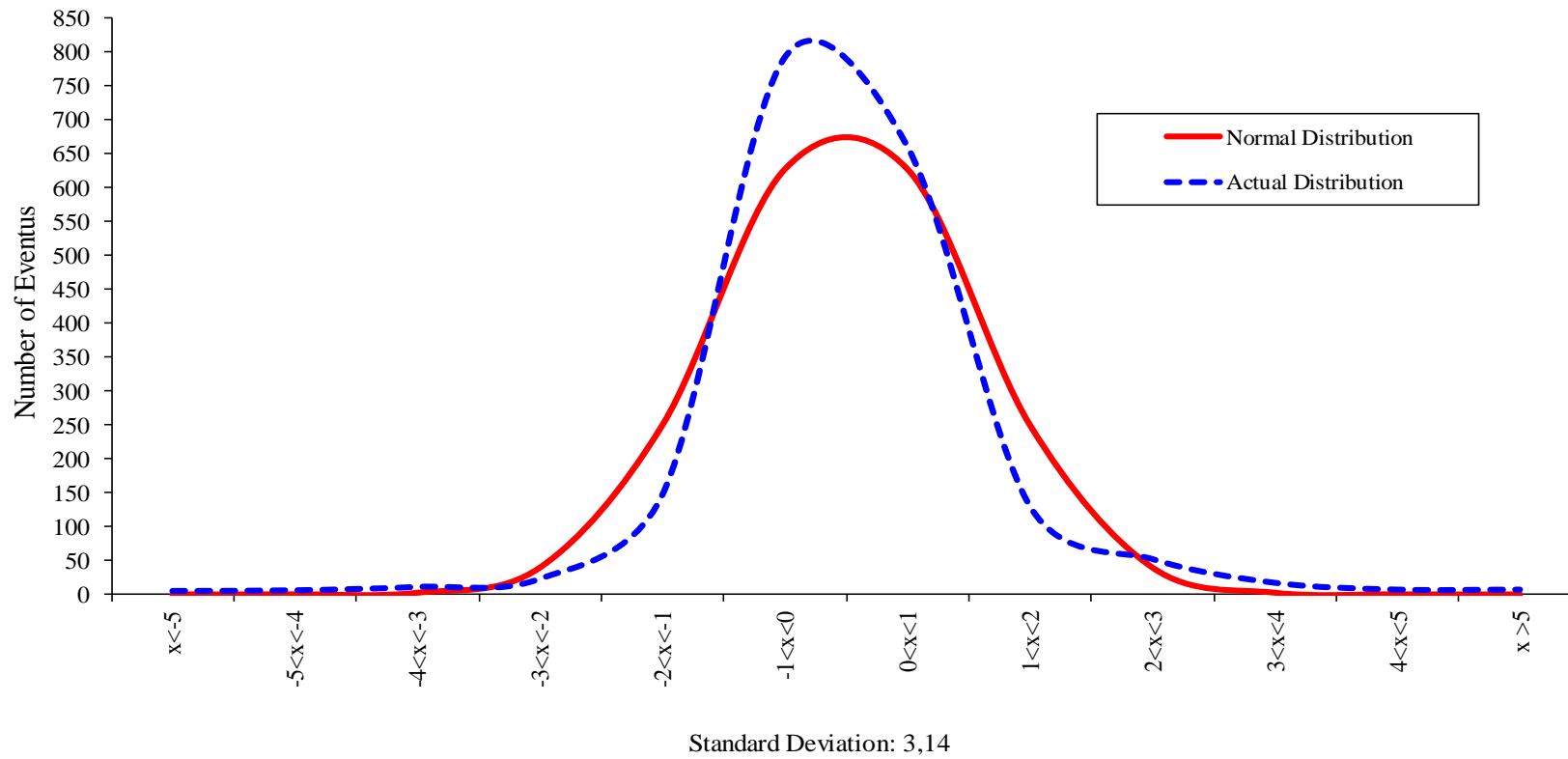
ATTACHMENT 9

Options on XYZ SpA ord. Shares Underlying Daily Price Variation Distribution



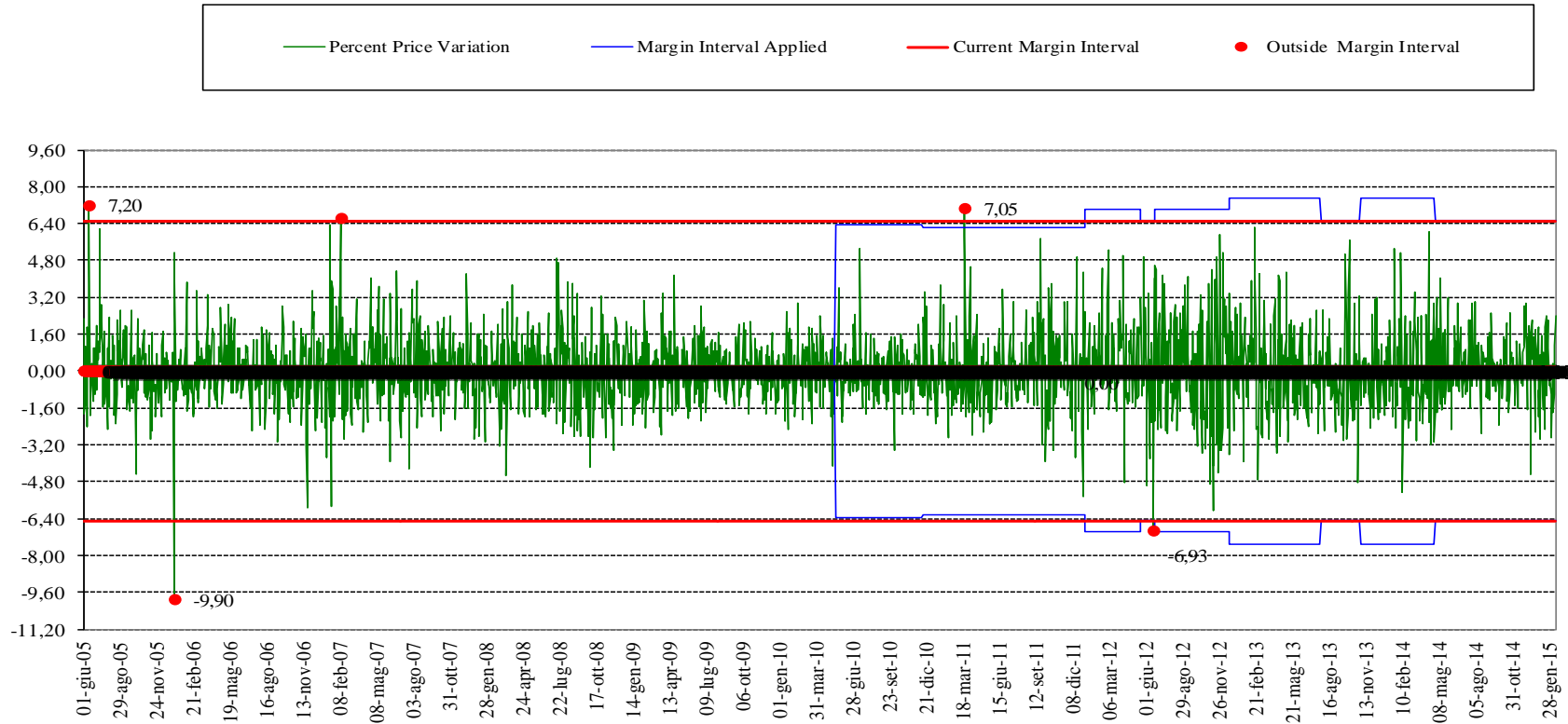
ATTACHMENT 10

Options on XYZ SpA ord. Shares Underlying Daily Price Variation Distribution



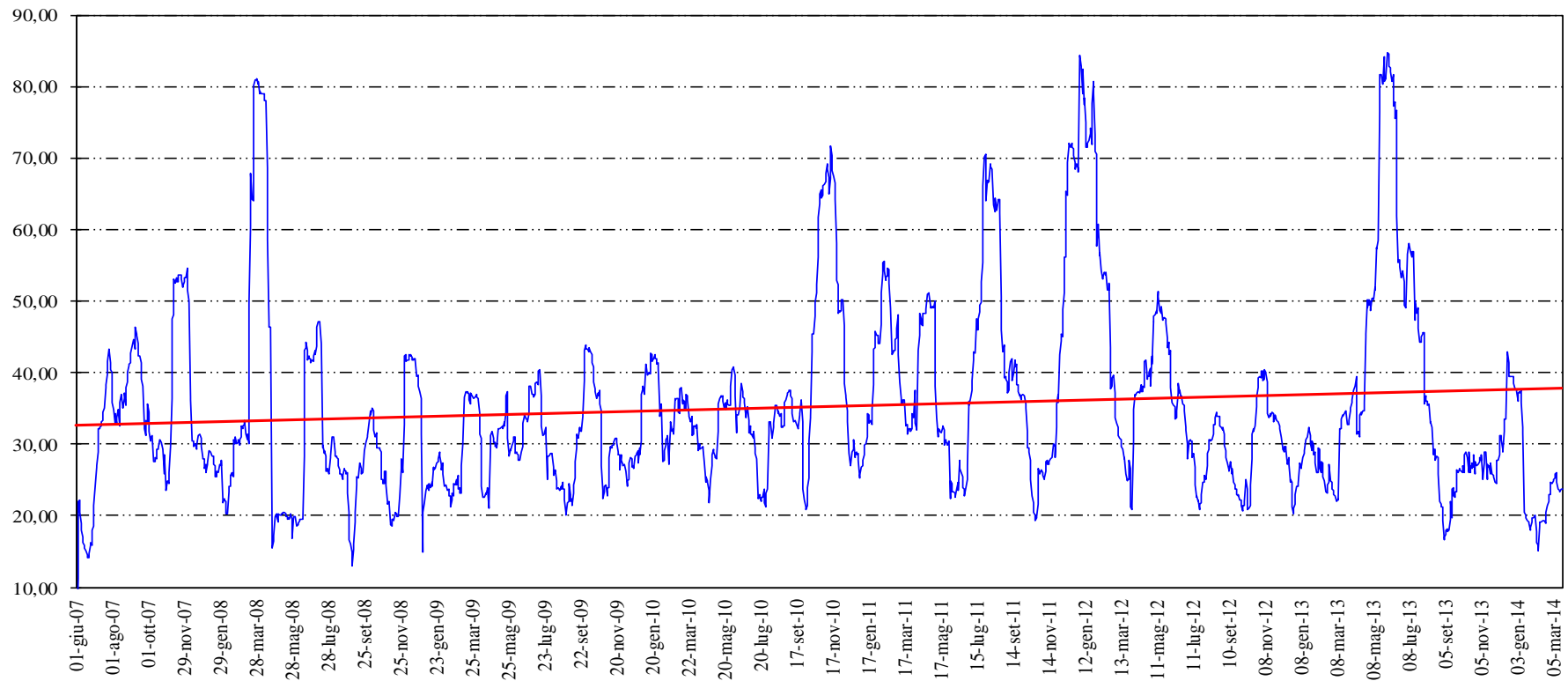
ATTACHMENT 11

Options on XYZ SpA ord. Shares Underlying Daily Price Variation Distribution



ATTACHMENT 12

Options on XXX SpA ord. Shares
Daily Annualized Volatility calculated on a monthly basis



ATTACHMENT 13

| XYZ | | | | | | | | | | | | | | | | |
|--|---------|----------|---------|---------|---------|---------|---------|---------|---------|---------|---------|----------|----------|---------|---------|----------------|
| Current Margin Interval: | 12,50% | | | | | | | | | | | | | | | |
| Current Minimum Margin (€): | 48,00 | | | | | | | | | | | | | | | |
| Current Short Options Adjustment (€) Approx: | 233,79 | | | | | | | | | | | | | | | |
| Multiplier (n. shares): | 500 | | | | | | | | | | | | | | | |
| MARGIN INTERVAL | TOTAL | 10 Years | 9 Years | 8 Years | 7 Years | 6 Years | 5 Years | 4 Years | 3 Years | 2 Years | 1 Years | 6 Months | 3 Months | 1 Month | 1 Week | |
| Standard Deviation of daily variation: | 2,46 | 2,40 | 2,35 | 2,39 | 2,49 | 2,61 | 2,80 | 3,02 | 2,57 | 2,39 | 2,73 | 3,41 | 3,51 | 2,62 | 1,32 | |
| Absolute performance: | 192,28% | 12,80% | 6,84% | 5,15% | -13,03% | -32,38% | -37,60% | -34,99% | -10,91% | -6,98% | -2,16% | -2,52% | 21,74% | 1,93% | 4,14% | |
| Annualized performance: | 3,92% | 1,35% | 0,74% | 0,63% | -1,98% | -6,33% | -9,01% | -10,22% | -3,78% | -3,56% | -2,16% | -4,96% | 117,61% | 25,89% | 678,57% | |
| Standard Deviation | 2,58 | 2,59 | 2,61 | 2,63 | 2,65 | 2,67 | 2,70 | 2,71 | 2,72 | 2,73 | 2,75 | 2,97 | 2,97 | 2,97 | 2,97 | |
| Number of days: | 7,063 | 2,525 | 2,273 | 2,020 | 1,768 | 1,515 | 1,263 | 1,010 | 758 | 505 | 253 | 127 | 64 | 21 | 5 | |
| Annualized Daily Volatility: | 39,13% | 38,16% | 37,32% | 37,97% | 39,62% | 41,53% | 44,55% | 47,99% | 40,95% | 37,99% | 43,41% | 54,30% | 55,82% | 41,63% | 21,00% | |
| Coverage Level Desired: | 99,000% | 99,050% | 99,100% | 99,150% | 99,200% | 99,250% | 99,300% | 99,325% | 99,350% | 99,375% | 99,400% | 99,700% | 99,700% | 99,700% | 99,700% | |
| Events to Include: | 6992,37 | 2501,01 | 2252,54 | 2002,83 | 1753,86 | 1503,64 | 1254,16 | 1003,18 | 753,07 | 501,84 | 251,48 | 126,62 | 63,36 | 20,79 | 4,95 | |
| Events to Exclude: | 71 | 23,99 | 20,46 | 17,17 | 14,14 | 11,36 | 8,84 | 6,82 | 4,93 | 3,16 | 1,52 | 0,38 | 0,19 | 0,06 | 0,02 | |
| 20-Oct-08 | 18,07% | 18,07% | 18,07% | 18,07% | 18,07% | 18,07% | 18,07% | 18,07% | 10,65% | 8,49% | 8,49% | 8,49% | 8,49% | 4,60% | 4,60% | |
| 29-Oct-08 | 17,15% | 17,15% | 17,15% | 17,15% | 17,15% | 17,15% | 17,15% | 17,15% | 8,49% | 8,16% | 7,72% | 7,72% | 6,55% | 3,90% | 3,90% | |
| 14-Oct-08 | 16,59% | 16,59% | 16,59% | 16,59% | 16,59% | 16,59% | 16,59% | 16,59% | 8,16% | 7,72% | 7,29% | 7,29% | 6,30% | 3,07% | 3,07% | |
| 30-Oct-08 | 16,03% | 16,03% | 16,03% | 16,03% | 16,03% | 16,03% | 16,03% | 16,03% | 7,72% | 7,29% | 6,55% | 6,55% | 6,13% | 3,02% | 3,02% | |
| 9-Dec-08 | 15,33% | 15,33% | 15,33% | 15,33% | 15,33% | 15,33% | 15,33% | 15,33% | 7,29% | 6,55% | 6,30% | 6,30% | 5,77% | 2,77% | 1,08% | |
| 25-Nov-08 | 14,74% | 14,74% | 14,74% | 14,74% | 14,74% | 14,74% | 14,74% | 14,74% | 7,06% | 6,30% | 6,13% | 6,13% | 5,22% | 1,92% | = | |
| 7-Sep-98 | 13,74% | 10,65% | 10,65% | 10,65% | 10,65% | 10,65% | 10,65% | 10,65% | 6,55% | 6,13% | 5,77% | 5,77% | 4,65% | 1,08% | = | |
| 8-Feb-00 | 13,04% | 9,12% | 9,12% | 9,12% | 9,12% | 9,12% | 9,12% | 9,12% | 6,30% | 5,82% | 5,22% | 5,22% | 4,60% | 0,71% | = | |
| 10-Mar-09 | 10,65% | 8,49% | 8,49% | 8,49% | 8,49% | 8,49% | 8,49% | 8,49% | 6,21% | 5,77% | 4,97% | 4,97% | 4,26% | 0,51% | = | |
| 27-Sep-01 | 10,13% | 8,16% | 8,16% | 8,16% | 8,16% | 8,16% | 8,16% | 8,16% | 6,13% | 5,22% | 4,65% | 4,65% | 4,23% | 0,38% | = | |
| 16-Oct-08 | 13,16% | 13,16% | 13,16% | 13,16% | 13,16% | 13,16% | 13,16% | 13,16% | 12,83% | 7,21% | 7,21% | 7,21% | 6,72% | 5,36% | 0,00% | |
| 6-Mar-09 | 12,83% | 12,83% | 12,83% | 12,83% | 12,83% | 12,83% | 12,83% | 12,83% | 11,66% | 6,99% | 6,93% | 6,93% | 6,64% | 3,53% | 0,00% | |
| 9-Oct-08 | 12,07% | 12,07% | 12,07% | 12,07% | 12,07% | 12,07% | 12,07% | 12,07% | 8,89% | 6,93% | 6,81% | 6,81% | 5,94% | 3,07% | 0,00% | |
| 3-Mar-09 | 11,66% | 11,66% | 11,66% | 11,66% | 11,66% | 11,66% | 11,66% | 11,66% | 8,16% | 6,81% | 6,72% | 6,72% | 5,78% | 3,00% | 0,00% | |
| 6-Nov-08 | 11,01% | 11,01% | 11,01% | 11,01% | 11,01% | 11,01% | 11,01% | 11,01% | 8,03% | 6,72% | 6,64% | 6,64% | 5,45% | 2,86% | 0,00% | |
| 23-Sep-02 | 10,59% | 10,59% | 9,81% | 9,81% | 9,81% | 9,81% | 9,81% | 9,81% | 7,21% | 6,64% | 5,94% | 5,94% | 5,36% | 0,82% | = | |
| 22-Jul-02 | 10,25% | 10,25% | 9,64% | 9,64% | 9,64% | 9,64% | 9,64% | 9,64% | 7,15% | 6,05% | 5,93% | 5,85% | 4,42% | 0,54% | = | |
| 28-Oct-97 | 9,87% | 9,81% | 9,05% | 9,05% | 9,05% | 9,05% | 9,05% | 9,05% | 6,99% | 5,94% | 5,85% | 5,78% | 4,08% | 0,31% | = | |
| 1-Dec-08 | 9,81% | 9,64% | 8,89% | 8,89% | 8,89% | 8,89% | 8,89% | 8,89% | 6,93% | 5,93% | 5,78% | 5,71% | 3,96% | 0,13% | = | |
| 27-Apr-98 | 9,71% | 9,05% | 8,57% | 8,57% | 8,57% | 8,57% | 8,57% | 8,57% | 6,85% | 5,85% | 5,71% | 5,70% | 3,53% | 0,00% | = | |
| Supposed Margin Interval (MAX): | 6,75% | 8,15% | 8,45% | 8,85% | 9,60% | 11,00% | 12,05% | 13,15% | 8,45% | 7,70% | 7,70% | 10,15% | 10,40% | 7,75% | 4,60% | 13,00% max avg |
| Supposed Margin Interval (MIN): | 6,75% | 8,15% | 8,20% | 8,60% | 9,15% | 10,70% | 11,70% | 12,85% | 8,20% | 7,30% | 7,50% | 10,15% | 10,40% | 7,75% | 4,65% | 12,85% max min |
| No. of Standard Deviation (MAX): | 2,74 | 3,40 | 3,60 | 3,71 | 3,85 | 4,21 | 4,30 | 4,36 | 3,28 | 3,22 | 2,82 | 2,97 | 2,96 | 2,96 | 3,48 | |
| No. of Standard Deviation (MIN): | 3 | 3,40 | 3,50 | 3,60 | 3,67 | 4,10 | 4,18 | 4,26 | 3,19 | 3,06 | 2,75 | 2,97 | 2,96 | 2,96 | 3,52 | |
| Obtained Coverage Level: | 98,66% | 99,08% | 99,15% | 99,20% | 99,25% | 99,33% | 99,36% | 99,40% | 99,45% | 99,59% | 99,58% | 100,00% | 100,00% | 100,00% | 99,82% | |
| Supposed Minimum Margin (€) MAX: | 21,00 | 26,00 | 27,00 | 28,00 | 30,00 | 35,00 | 38,00 | 42,00 | 27,00 | 24,00 | 24,00 | 32,00 | 33,00 | 25,00 | 15,00 | |
| Supposed Minimum Margin (€) MIN: | 21,00 | 26,00 | 26,00 | 27,00 | 29,00 | 34,00 | 37,00 | 41,00 | 26,00 | 23,00 | 24,00 | 32,00 | 33,00 | 25,00 | 15,00 | |
| Supposed Short Options Adjustment (€) MAX: | 106,99 | 129,18 | 133,93 | 140,27 | 152,16 | 174,35 | 190,99 | 208,43 | 133,93 | 122,05 | 122,05 | 160,88 | 164,84 | 122,84 | 72,91 | |
| Supposed Short Options Adjustment (€) MIN: | 106,99 | 129,18 | 129,97 | 136,31 | 145,03 | 169,60 | 185,45 | 203,67 | 129,97 | 115,71 | 118,88 | 160,88 | 164,84 | 122,84 | 73,70 | |

Increases

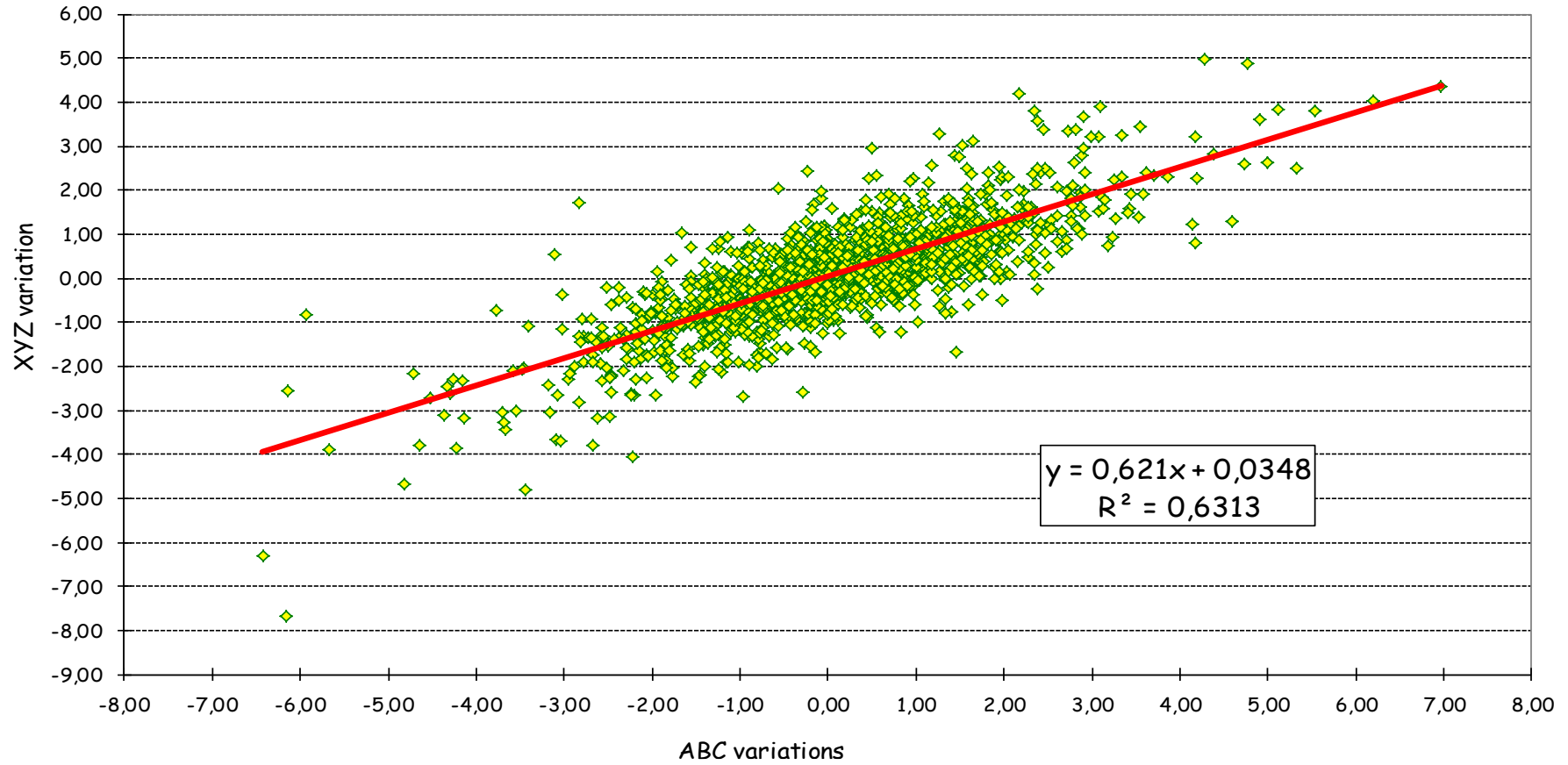
Decreases

Max Variations

ATTACHEMNT 14

ABC/XYZ Product Group Offset Factor:

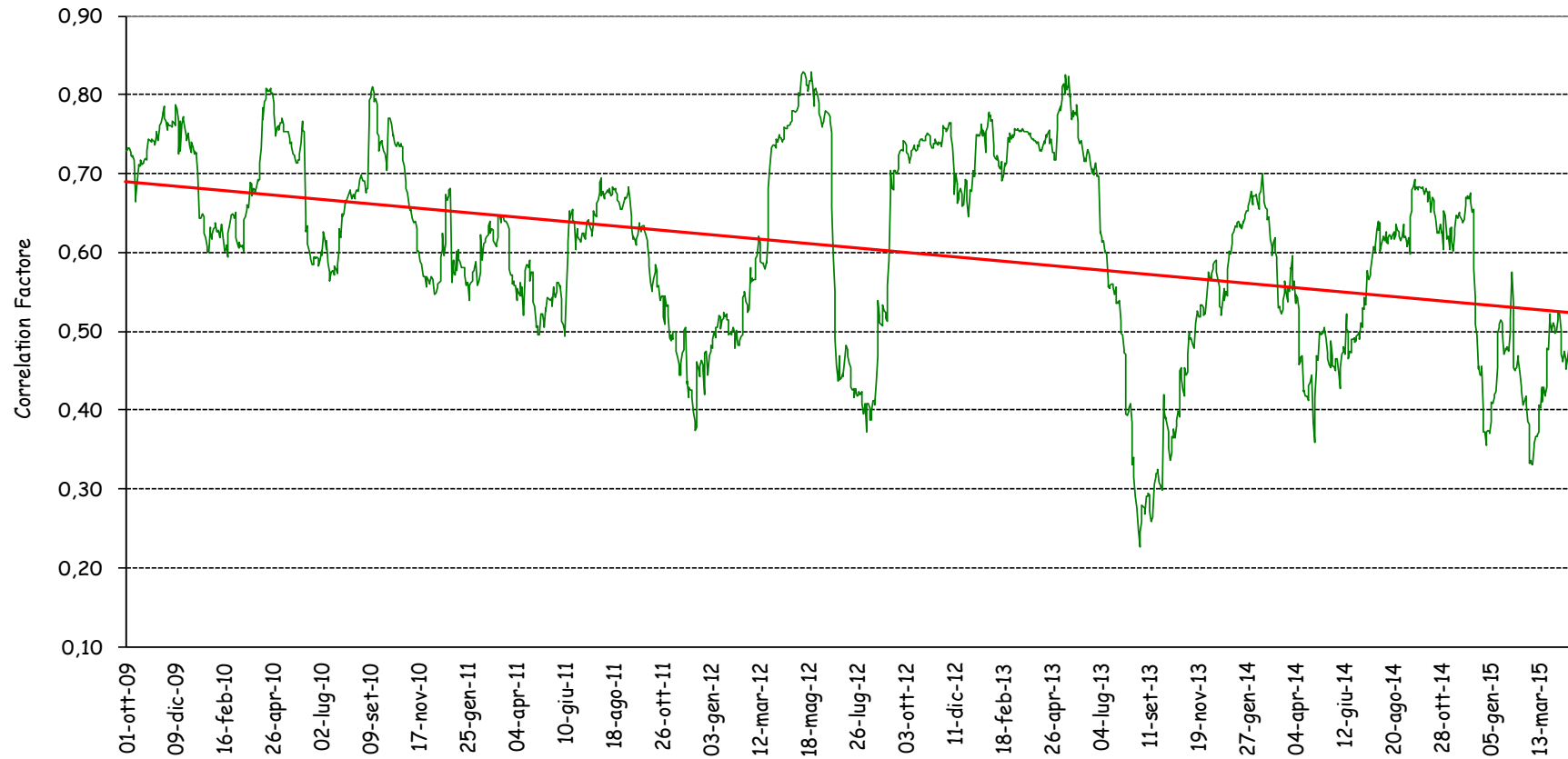
Correlation between ABC and XYZ daily value variations



ATTACHMENT 15

ABC/XYZ Product Group Offset Factor:

Correlation between ABC and XYZ calculated on a quarterly basis



ATTACHMENT 16

3 long positions on futures exp. JNYY, trading price 12,0877; reference price 12,0272
2 short positions on futures exp. SPYY, trading price 12,1869; reference price 12,126

| Variation Margins (Settle-to-Market) | | |
|--|---------------|-------|
| (Reference Price - Trading Price) x Numb. Positions x Numb. Underlying | | |
| (12,0272 - 12,0877) x 3 x 1000 | -181,50 | Debit |
| (12,126 - 12,1869) x -2 x 1000 | 121,80 | Debit |
| TOTAL | -59,70 | Debit |

| Futures Straddle Margins | | |
|--|----------------|-------|
| (Straddle Positions) x Straddle margin | | |
| 2 x 400 | -800,00 | Debit |
| TOTAL | -800,00 | Debit |

| | DOWNSIDE | | | | | Market Value | UPSIDE | | | | |
|---|------------------|---------------|---------------|---------------|---------------|---------------------|---------------|---------------|---------------|---------------|---------------|
| Margin Interval | -10,00% | -8,00% | -6,00% | -4,00% | -2,00% | | 2,00% | 4,00% | 6,00% | 8,00% | 10,00% |
| Securities Theoretical Value | 10,746 | 10,985 | 11,224 | 11,462 | 11,701 | 11,940 | 12,179 | 12,418 | 12,656 | 12,895 | 13,134 |
| Unitary settlement gain/loss (Euro) | -1,194 | -0,955 | -0,716 | -0,478 | -0,239 | | 0,239 | 0,478 | 0,716 | 0,955 | 1,194 |
| Futures Theoretical Value | 10,833 | 11,072 | 11,311 | 11,550 | 11,788 | 12,027 | 12,266 | 12,505 | 12,744 | 12,982 | 13,221 |
| Closing Price | 12,027 | 12,027 | 12,027 | 12,027 | 12,027 | | 12,027 | 12,027 | 12,027 | 12,027 | 12,027 |
| Futures Theoretical Value | -1,194 | -0,955 | -0,716 | -0,478 | -0,239 | | 0,239 | 0,478 | 0,716 | 0,955 | 1,194 |
| X 1 Long Positions | -1,194 | -0,955 | -0,716 | -0,478 | -0,239 | | 0,239 | 0,478 | 0,716 | 0,955 | 1,194 |
| Unitary settlement gain/loss Futures (Euro) | -1.194,000 | -955,200 | -716,400 | -477,600 | -238,800 | | 238,800 | 477,600 | 716,400 | 955,200 | 1.194,000 |
| Settlement gain/loss Total (Euro) | -1.194,00 | -955,200 | -716,40 | -477,60 | -238,80 | | 238,800 | 477,600 | 716,400 | 955,200 | 1.194,000 |
| Largest Theoretical loss | -1.194,00 | € Debit | | | | | | | | | |
| Additional Margins | -1.194,00 | € Debit | | | | | | | | | |
| Futures Straddle Margins | -800,00 | € Debit | | | | | | | | | |
| Total Initial margins - Class Group | -1.994,00 | € Debit | | | | | | | | | |

ATTACHMENT 17

3 long expiring futures positions; settlement price 12,00; underlying reference price 11,94

| Settlement Balance | |
|---|---------------------------|
| Settlement Price x Numb. Positions x Numb. Underlying | |
| 12 x -3000 | -36.000,00 |
| Securities net amount | 3.000,00 € Collect |
| Cash net amount | -36.000,00 € Pay |

| Mark-to-Market Margin | |
|---|------------------------|
| (Reference Price - Settlement Price) x Numb. Positions x Numb. Underlying | |
| (11,94-12) x 3000 | -180,00 € Debit |
| TOTAL | -180,00 € Debit |

| | Downside | | | | | Market value | Upside | | | | |
|--|------------------|---------------|---------------|---------------|---------------|---------------------|---------------|---------------|---------------|---------------|---------------|
| Margin Interval | -10,00% | -8,00% | -6,00% | -4,00% | -2,00% | | 2,00% | 4,00% | 6,00% | 8,00% | 10,00% |
| Securities Theoretical Value | 10,746 | 10,985 | 11,224 | 11,462 | 11,701 | 11,940 | 12,179 | 12,418 | 12,656 | 12,895 | 13,134 |
| Reference Price | 11,940 | 11,940 | 11,940 | 11,940 | 11,940 | | 11,940 | 11,940 | 11,940 | 11,940 | 11,940 |
| Unitary settlement gain/loss (Euro) | -1,194 | -0,955 | -0,716 | -0,478 | -0,239 | | 0,239 | 0,478 | 0,716 | 0,955 | 1,194 |
| Theoretical settlement gain/loss (Euro) X 3000 securities long positions | -3.582,00 | -2.865,60 | -2.149,20 | -1.432,80 | -716,40 | | 716,40 | 1.432,80 | 2.149,20 | 2.865,60 | 3.582,00 |
| Settlement gain/loss Total (Euro) | -3.582,00 | -2.865,60 | -2.149,20 | -1.432,80 | -716,40 | | 716,40 | 1.432,80 | 2.149,20 | 2.865,60 | 3.582,00 |
| Largest Theoretical loss | -3.582,00 | € Debit | | | | | | | | | |
| Additional Margins | -3.582,00 | € Debit | | | | | | | | | |
| Futures Straddle Margins | 0,00 | € Credit | | | | | | | | | |
| Mark to Market Margins | -180,00 | € Debit | | | | | | | | | |
| Total Initial margins - Class Group | -3.762,00 | € Debit | | | | | | | | | |

ATTACHMENT 18

2 long positions options call 11,00 exp. SPYY, trading price 2,216; closing price 2,176
2 short positions futures exp. JNYY, trading price 12,0877; closing price 12,0272

| Variation Margins (Settle-to-Market) | |
|--|------------------------|
| (Reference Price - Trading Price) x Numb. Positions x Numb. Underlying | |
| Underlying | |
| (12,0272 - 12,0877) x -2 x 1000 | 121,00 € Credit |
| TOTAL | 121,00 € Credit |

| Premium Options | |
|---|---------------------------|
| (Trading Price x Numb.Positions x Numb. Underlying) | |
| 2,2162 x 2 x 1000 | 4.432,40 € Collect |
| TOTAL | 4.432,40 € Collect |

| Premium Margins | |
|--|--------------------------|
| (Closing Price x Numb. Positions x Numb. Underlying) | |
| 2,1755 x 2 x 1000 | 4.351,00 € Credit |
| TOTAL | 4.351,00 € Credit |

| Margin Interval | Downside | | | | | Market Value | Upside | | | | |
|--|-------------------|------------|-----------|----------|----------|--------------|----------|----------|------------|------------|------------|
| | -10,00% | -8,00% | -6,00% | -4,00% | -2,00% | | 2,00% | 4,00% | 6,00% | 8,00% | 10,00% |
| Securities Theoretical Value | 10,746 | 10,985 | 11,224 | 11,462 | 11,701 | 11,940 | 12,179 | 12,418 | 12,656 | 12,895 | 13,134 |
| Unitary settlement gain/loss (Euro) | -1,194 | -0,955 | -0,716 | -0,478 | -0,239 | | 0,239 | 0,478 | 0,716 | 0,955 | 1,194 |
| Theoretical Value Option Call 11 OCTYY | 1,436 | 1,573 | 1,715 | 1,863 | 2,017 | 2,176 | 2,339 | 2,508 | 2,681 | 2,858 | 3,039 |
| Closing Price | 2,176 | 2,176 | 2,176 | 2,176 | 2,176 | | 2,176 | 2,176 | 2,176 | 2,176 | 2,176 |
| Settlement gain/loss (Euro) | -0,740 | -0,603 | -0,461 | -0,312 | -0,159 | | 0,164 | 0,332 | 0,505 | 0,683 | 0,864 |
| X 2 Long Positions | -1,479 | -1,206 | -0,921 | -0,625 | -0,318 | | 0,327 | 0,664 | 1,010 | 1,365 | 1,728 |
| Settlement Theoretical gain/loss (Euro) Call 11 OCT-YY | -1,479,000 | -1.205,800 | -921,000 | -624,600 | -317,600 | | 327,400 | 664,400 | 1.010,400 | 1.365,000 | 1.727,800 |
| Futures Theoretical Value | 10,833 | 11,072 | 11,311 | 11,550 | 11,788 | 12,027 | 12,266 | 12,505 | 12,744 | 12,982 | 13,221 |
| Closing Price | 12,027 | 12,027 | 12,027 | 12,027 | 12,027 | | 12,027 | 12,027 | 12,027 | 12,027 | 12,027 |
| Unitary settlement gain/loss (Euro) | -1,194 | -0,955 | -0,716 | -0,478 | -0,239 | | 0,239 | 0,478 | 0,716 | 0,955 | 1,194 |
| X 2 Long Positions | 2,388 | 1,910 | 1,433 | 0,955 | 0,478 | | -0,478 | -0,955 | -1,433 | -1,910 | -2,388 |
| Settlement gain/loss Futures (Euro) | 2.388,000 | 1.910,400 | 1.432,800 | 955,200 | 477,600 | | -477,600 | -955,200 | -1.432,800 | -1.910,400 | -2.388,000 |
| Settlement gain/loss Total (Euro) | 909,00 | 704,60 | 511,80 | 330,60 | 160,00 | | -150,20 | -290,80 | -422,40 | -545,40 | -660,20 |
| Largest Theoretical loss | -660,20 € Debit | | | | | | | | | | |
| Additional Margins | -660,20 € Debit | | | | | | | | | | |
| Option Premium Margin | 4.351,00 € Credit | | | | | | | | | | |
| Total Initial margins - Class Group | 3.690,80 € Credit | | | | | | | | | | |

CONTACT

Cassa di Compensazione e Garanzia S.p.A.

Risk Management

ccg-rm.group@euronext.com

www.ccg.it

Disclaimer

This publication is for information purposes only and is not a recommendation to engage in investment activities. This publication is provided "as is" without representation or warranty of any kind. Whilst all reasonable care has been taken to ensure the accuracy of the content, CC&G does not guarantee its accuracy or completeness. CC&G will not be held liable for any loss or damages of any nature ensuing from using, trusting or acting on information provided. No information set out or referred to in this publication shall form the basis of any contract. The creation of rights and obligations in respect of services provided by CC&G shall depend solely on the applicable rules and /or contractual provisions of CC&G. All proprietary rights and interest in or connected with this publication shall vest in CC&G. No part of it may be redistributed or reproduced in any form without the prior written permission of CC&G. CC&G disclaims any duty to update this information. Unauthorised use of the trademarks and intellectual properties owned by the Company or other Companies belonging to Euronext Group is strictly prohibited and may violate trademark, copyright or other applicable laws.



www.ccg.it